

# Planning Committee

10.00am, Thursday, 2 March 2017

## Open Space 2021, Open Space Action Plans

Item number	6.1
Report number	
Executive/routine	Executive
Wards	All

### Executive Summary

---

'Open Space 2021', Edinburgh's new Open Space Strategy, was approved by the Planning Committee on [8 December 2016](#).

This report proposes the basis for Open Space Action Plans for each Locality to support delivery of the strategy and capture cross-sector activity contributing to the improvement of the city's green network over the next five years.

.

### Links

---

Coalition Pledges	<a href="#">P33, P40, P42, P48</a>
Council Priorities	<a href="#">CP1, CP2, CP4, CP9, CP11, CP12</a>
Single Outcome Agreement	<a href="#">SO2, SO3, SO4</a>

## Open Space 2021, Open Space Action Plans

### 1. Recommendations

---

- 1.1 It is recommended that the Planning Committee:
- 1.1.1 approves the basis of Open Space Action Plans for each Locality to support delivery of 'Open Space 2021' (Appendices 1 - 4); and
  - 1.1.2 refers 'Open Space 2021' and the approved Action Plans to the Corporate Policy and Strategy Committee for information.

### 2. Background

---

- 2.1 'Open Space 2021' - Edinburgh's new Open Space Strategy was approved by Planning Committee on [8 December 2016](#).
- 2.2 The Strategy informs decisions regarding:
- the management of existing parks and greenspaces;
  - the requirements for open space provision in new developments; and
  - management and development proposals which could result in reduced access to open space.
- 2.3 To support the Strategy in taking a co-ordinated approach to protecting and developing the city's network of open space, Open Space Action Plans have been aligned with Edinburgh's four Locality areas.

### 3. Main report

---

- 3.1 The Open Space Action Plans include analysis showing how each Locality compares to the citywide level of access to quality greenspace and play space, highlighting recent changes to provision.
- 3.2 Actions, including estimated costs, may be subject to review, further feasibility studies and changes following local consultations.
- 3.3 These are the first versions of the Open Space Action Plans, which set out the following citywide and strategic actions:
- 3.3.1 improvements to Saughton Park, Leith Links and Calton Hill;
  - 3.3.2 implementation of a network of new parks, local greenspaces and play areas through delivery of the adopted Edinburgh Local Development Plan (LDP) and other individual planning decisions;

- 3.3.3 enhancements to active travel and habitat connectivity through management and extension of the city's green network and expansion of the Edinburgh Living Landscape initiative;
  - 3.3.4 empowering communities to establish community gardens, orchards and woodlands in under-utilised spaces, in particular to support local food growing;
  - 3.3.5 extending annual quality surveys and the Friends Group network to cemeteries and burial grounds to improve their heritage and recreation potential, working with Edinburgh World Heritage to improve five burial grounds in the World Heritage Site; and
  - 3.3.6 actions carried forward from the Play Area Action Plan (2011-16) and Open Space Strategy (2010).
- 3.4 Through periodic review, further actions may be included as related strategies are progressed, in particular the Council's revised Allotment Strategy, Sports and Physical Activity Strategy and Play Area Action Plan.
- 3.5 As working documents, the Action Plans will subsequently incorporate local environmental priorities determined by Locality Improvement Plans (LIPs).

## **4. Measures of success**

---

- 4.1 Measures of success will include:
- ongoing improvements in access to greenspace, green networks and play space through both management and the implementation of new developments;
  - improvements to the city's historic burial grounds;
  - further community adoption of local greenspaces; and
  - the integration of citywide placemaking objectives with local priorities determined through Localities.

## **5. Financial impact**

---

- 5.1 The report raises no additional funding requirements from the City of Edinburgh Council.
- 5.2 Achieving the strategy's objectives will involve a combination of measures, including: private sector delivery, external grant funding, partnership delivery, ongoing community fund-raising and voluntary support, and efficiencies in maintenance practices. Identified Council actions will proceed at a rate at which resources allow.

## **6. Risk, policy, compliance and governance impact**

---

- 6.1 This report does not raise any concern in relation to risk, policy, compliance and governance.

## **7. Equalities impact**

---

- 7.1 The Open Space Action Plans support the Open Space Strategy's aims to protect and improve access to quality greenspace across the city and to ensure its delivery, as appropriate, as part of new planning proposals. The rights of the child will be enhanced by improving children's right to play, including those with disabilities. There are no predicted negative impacts on equalities.

## **8. Sustainability impact**

---

- 8.1 The impacts of this report in relation to the three elements of the Climate Change (Scotland) Act 2009 Public Bodies Duties have been considered, and the outcomes are summarised below. The proposals in this report will:
- reduce carbon emissions by extending and improving the green network for walking and cycling, encouraging the use of greenspace for food growing and by reaffirming quality standards that include environmentally sustainable management practices;
  - increase the city's resilience to climate change impacts through the protection of existing greenspace and the planning of new provision as the city grows, helping to conserve soils, wildlife habitats, increase tree and woodland cover and to intercept and absorb rainfall; and
  - help achieve a sustainable Edinburgh by improving access to quality greenspace for all, reflecting a range of recreational needs that contribute to wellbeing, providing inclusive places to meet and participate in socially cohesive activities involving local decision making. Well managed greenspaces provide the setting for investment and help meet the recreational needs of the city's workforce, including sporting and cultural events. Allotments and community growing support the local food economy and proposals to increase the diversity of native habitats within greenspaces, and their connections with surrounding habitats will further the conservation of biodiversity.

## **9. Consultation and engagement**

---

- 9.1 The Action Plans will support delivery of the Strategy's standards and principles which received broad support during the consultation period and were informed by stakeholder engagement.
- 9.2 The first versions of the Action Plans consolidate a number of existing greenspace commitments alongside greenspace proposals established by the LDP.



- 9.3 New actions will be added as part of ongoing dialogue with local communities and Friends of Parks Groups through the review of related strategies and action plans and to reflect environmental priorities set by the LIPs.

## 10. Background reading/external references

---

- 10.1 Open Space 2021, Edinburgh's Open Space Strategy, [Report to Planning Committee](#), 8 December 2016

### **Paul Lawrence**

Executive Director Place

Contact: Andrew Smith, Planning Officer

E-mail: [openspacestrategy@edinburgh.gov.uk](mailto:openspacestrategy@edinburgh.gov.uk) | Tel: 0131 469 3762

## 11. Links

---

<b>Coalition Pledges</b>	<p><b>P33</b> - Strengthen Neighbourhood Partnerships and further involve local people in decisions on how Council resources are used</p> <p><b>P40</b> - Work with Edinburgh World Heritage Trust and other stakeholders to conserve the city's built heritage</p> <p><b>P42</b> - Continue to support and invest in our sporting infrastructure</p> <p><b>P48</b> - Use Green Flag and other strategies to preserve our green spaces</p>
<b>Council Priorities</b>	<p><b>CP1</b> - Children and young people fulfil their potential</p> <p><b>CP2</b> - Improved health and wellbeing: reduced inequalities</p> <p><b>CP4</b> - Safe and empowered communities</p> <p><b>CP9</b> - An attractive city</p> <p><b>CP11</b> - An accessible connected city</p> <p><b>CP12</b> - A built environment to match our ambition</p>
<b>Single Outcome Agreement</b>	<p><b>SO2</b> - Edinburgh's citizens experience improved health and wellbeing, with reduced inequalities in health</p> <p><b>SO3</b> - Edinburgh's children and young people enjoy their childhood and fulfil their potential</p> <p><b>SO4</b> - Edinburgh's communities are safer and have improved physical and social fabric</p>
<b>Appendices</b>	<p>Appendix 1 North West Locality Open Space Action Plan</p> <p>Appendix 2 North East Locality Open Space Action Plan</p> <p>Appendix 3 South East Locality Open Space Action Plan</p> <p>Appendix 4 South West Locality Open Space Action Plan</p>

## **Appendix 1**

### **North West Edinburgh**

### **Open Space Action Plan (March 2017)**

#### **Introduction**

This is one of four Open Space Action Plans to support delivery of Open Space 2021, Edinburgh's Open Space Strategy.

Open Space is a key element of Edinburgh's physical, social and environmental fabric and Open Space 2021 sets guiding standards for existing and new open space provision as the city grows.

Through standards based on open space quality, size and distance from homes, the Strategy aims to increase the number of people that can benefit from greenspaces that are sustainably managed, biologically diverse and contribute to health and wellbeing.

The Open Space Profile shows how the Locality compares to the overall picture of open space across the city, highlighting changes to provision.

It is a working plan, to be reviewed periodically to capture collective efforts which lead to the improvement and extension of Edinburgh's green network. Actions, including estimated costs, may be subject to review, further feasibility studies and change.

The Action Plan sets out proposals to help reduce inequalities in access to good quality open space and play provision. In time, it will reflect local environment priorities emerging through co-production of Locality Improvement Plans by Community Planning partners.

The first version shows citywide priorities identified by Edinburgh's annual parks quality assessment and actions carried forward from the existing Play Area Action Plan (2011-16) and previous Open Space Strategy (2010).

The Action Plan will co-ordinate ongoing open space management actions with those relating to development, including changes arising from individual planning decisions and the delivery of new parks and play areas through the adopted Edinburgh Local Development Plan (LDP).

Further details may be included as related strategies, guidance and projects are progressed, in particular those relating to allotments and food growing, biodiversity, climate change adaptation, outdoor sports facilities, green networks and play.

# Appendix 1

## North West Edinburgh

## Open Space Action Plan (March 2017)

### Open Space Profile

#### Audit

The Open Space Audit (2016) recorded urban open spaces over 500 square metres within the Locality and categorised these by their main function or type.

Changes to greenspace provision since 2009/10 include:

- New local greenspaces have been created through housing developments at Ratho, Kirkliston, East Craigs, Drumbrae, Kimmerghame Loan, Ellersly Road and West Pilton Crescent. Local greenspace has been lost through redevelopment of Council housing at Muirhouse and Pennywell, where new provision will be established;
- In 2014, the Council opened Buttercup Farm Park, a new public park and play area on the site of the former Drumbrae Primary School playing fields. New publicly accessible parkland and play facilities were also created to serve the expanding communities of Ratho and Kirkliston;
- Since 2010, the Parks Quality Score of the following parks has improved to meet the large greenspace standard: Allison Park and Pikes Pool, Gypsy Brae Park and Recreation Ground, East Pilton Park, Muirhouse Linear Park and Inverleith Park;
- The following play areas were improved from 'fair' to 'good': Craigievar Square, Union Park, Ratho Station Park, Riverside Park, East Pilton Park and Northview Court. Play facilities were upgraded to 'Very Good' at King George V Park, Eyre Place. New public play provision was created at Dean Village and through private sector housing at East Craigs. Existing provision was removed at West Pilton Rise and renewed at Gateside, Kirkliston;
- 3500 trees were planted along the North Edinburgh Paths and non-native invasive species cleared by Edinburgh and Lothians Greenspace Trust and sections of the Edinburgh Waterfront Promenade were implemented between Cramond and Granton; and
- New allotments have been established at Drumbrae, Kirkliston and at Victoria Park through the conversion of one existing bowling green to provide growing space.

## Appendix 1

### North West Edinburgh

### Open Space Action Plan (March 2017)

The following maps show a picture of where Edinburgh's greenspace standards from Open Space 2021 are being achieved and where there are deficiencies in access to greenspace or play areas. To reduce inequalities in access to provision, quality data is mapped against the 20% most deprived areas in Scotland from the Scottish Index of Multiple Deprivation (SIMD - 2016).

#### Local Greenspace Standard

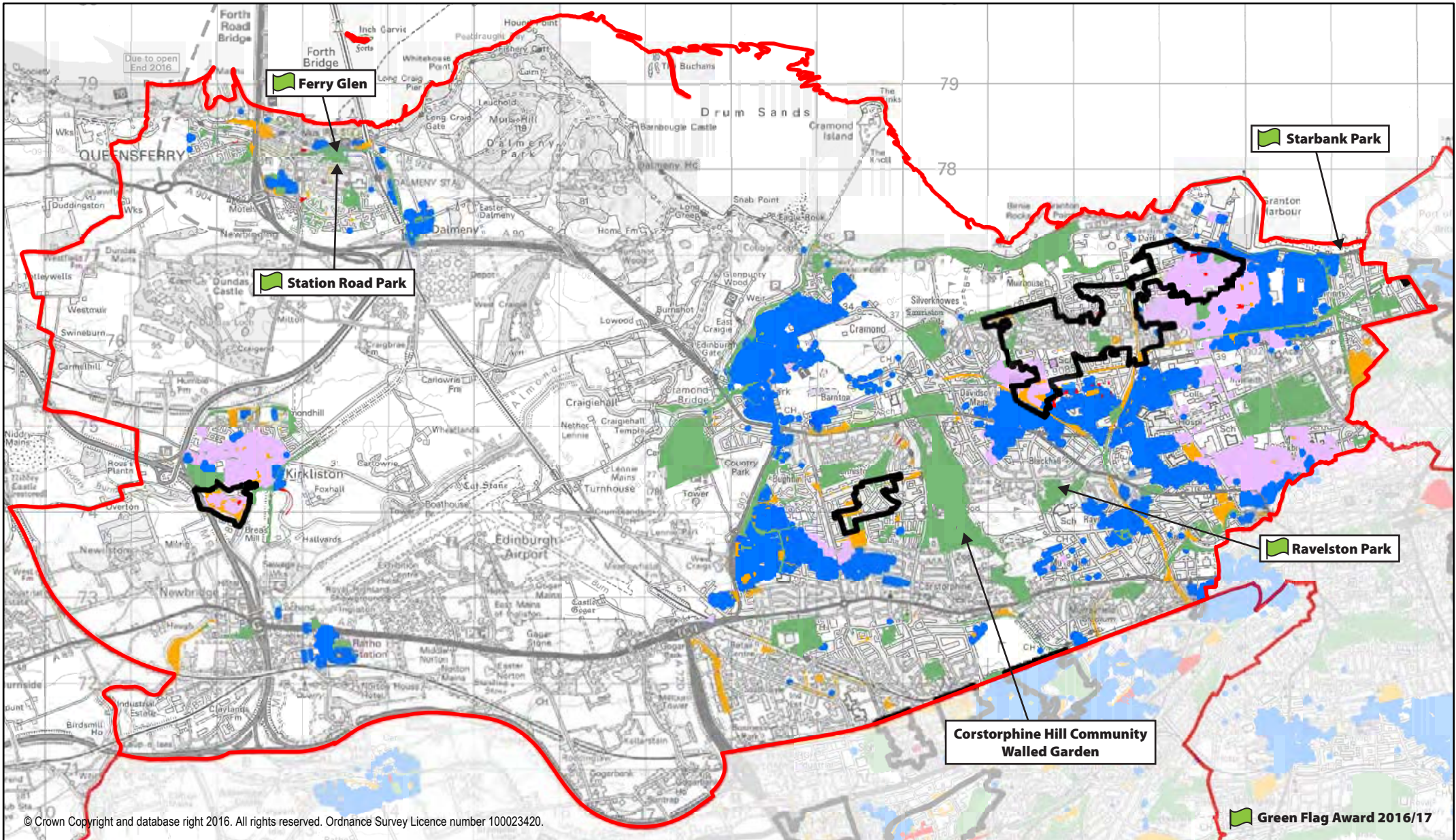
**Open Space 2021 requires all homes to be within 400 metres walking distance of a good quality, accessible greenspace of at least 500 sq.m.**

77% of homes in the North West Locality are served by the local greenspace standard by comparison with 87.7% across the city. Some 23% of homes are not served by the standard, represented by the areas shown in blue in the map overleaf. Residential areas which are served by the standard are indicated by the black and white base map only, whilst places highlighted in pink reflect improvements in access to greenspaces since 2010.

Areas not served by the local greenspace standard, include parts of Trinity and Wardie, Blackhall, Drylaw and Craigleith, Cramond, East Craigs and Corstorphine. As a result of improvements to Muirhouse Linear Park and East Pilton Park, the map showing where the standard has been achieved reveals no clear relationship with the 20% most deprived areas in Scotland (SIMD 2016)

Local greenspaces awarded a Green Flag Award in 2016 included: Starbank Park, Ravelston Park, Ferry Glen, Station Road Park and Corstorphine Hill Community Walled Garden in the Green Flag Award Community Category.





<b>Legend</b>	Quality grade	Scottish Index of Multiple Deprivation 2016 (20% most deprived areas in Scotland)	Homes now served by standard but not in 2010 Homes without access to a good quality local greenspace	<h2>North West Locality</h2> <h3>Access to Local Greenspace in 2016</h3>		
	Good				Fair	Low

## Appendix 1

### North West Edinburgh

### Open Space Action Plan (March 2017)

#### Large Greenspace Standard

**Open Space 2021** requires all homes to be within 800m walking distance of an accessible large greenspace of at least 2 hectares.

- **All newly created large greenspaces should be of 'good' quality regardless of type**
- **Council managed large greenspaces should be of 'good' quality for City Parks, Community Parks and Recreation Grounds and 'good+' for Premier Parks and Natural Heritage Parks.**

**80.6%** of homes in the North West Locality are served by the large greenspace standard by comparison with **79%** across the city. Some **19.4%** of homes are not served by the standard, represented by the areas shown in blue in the map overleaf. Residential areas which are served by the standard are indicated by the black and white base map only, whilst places highlighted in pink reflect improvements in access to greenspaces since 2010.

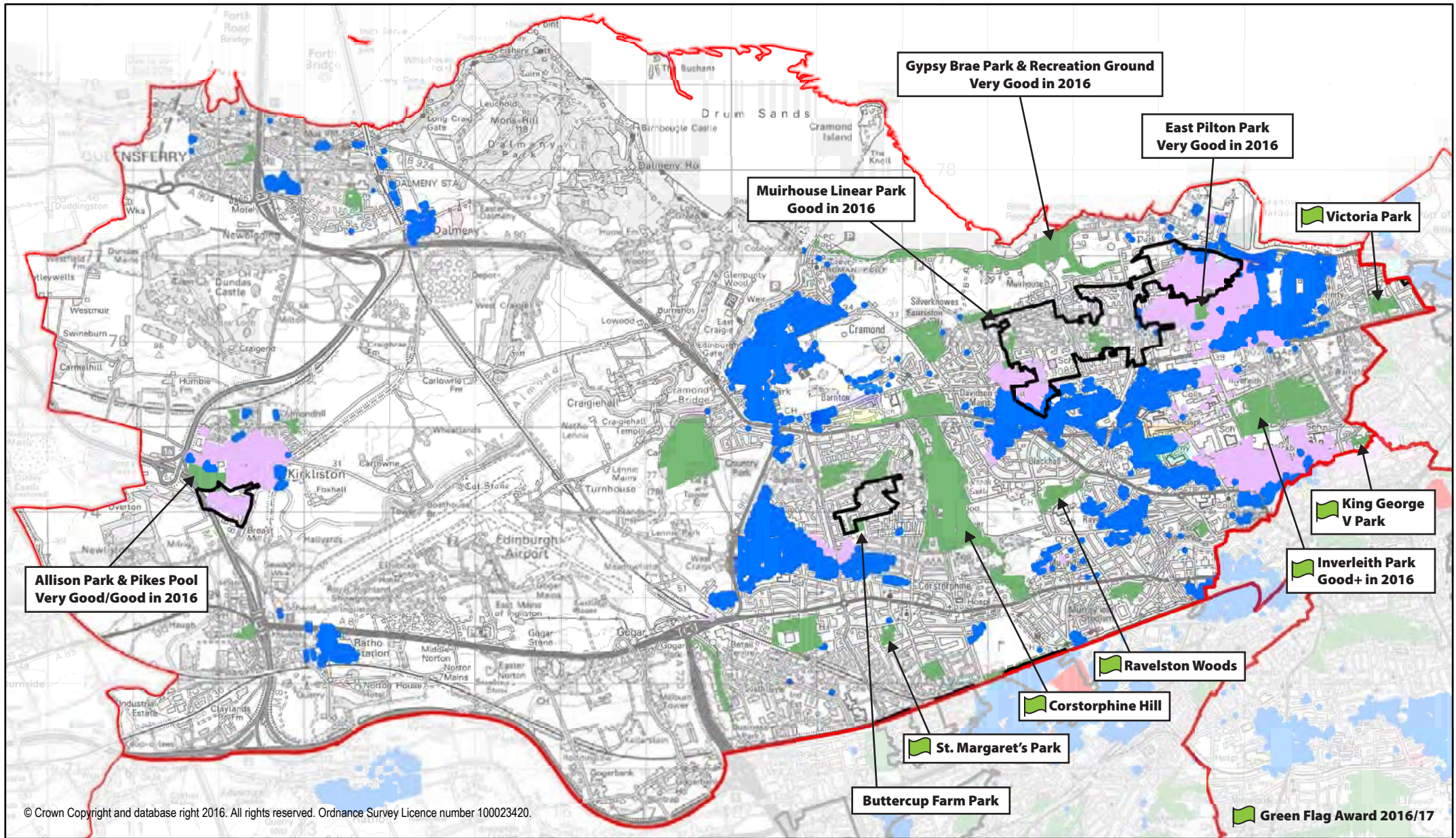
The parts of the city not served by the large greenspace standard reflect those without access to local greenspaces.

Since 2010, the Parks Quality Score of the following parks has improved to meet the large greenspace standard: Allison Park and Pikes Pool, Gypsy Brae Park and Recreation Ground, East Pilton Park, Muirhouse Linear Park and Inverleith Park.

In 2014, the Council opened Buttercup Farm Park, a new public park and play area on the site of the former Drumbrae Primary School playing fields. New publicly accessible parkland and play facilities were also created to serve the expanding communities of Ratho and Kirkliston.

Large Parks and Gardens awarded a Green Flag in 2016 include: Victoria Park, King George V Park, Inverleith Park, Ravelston Woods, Corstorphine Hill and St Margaret's Park.





Legend	
	Large Open Space meeting standard
	not meeting standard

	Homes now served by standard but not in 2010		Scottish Index of Multiple Deprivation 2016 (20% most deprived areas in Scotland)
	Homes still not served by the standard in 2016		

## North West Locality Access to Large Greenspaces in 2016



## Appendix 1

### North West Edinburgh

### Open Space Action Plan (March 2017)

#### Play Access Standard

Open Space 2021 requires all homes to have access to at least one of the following:

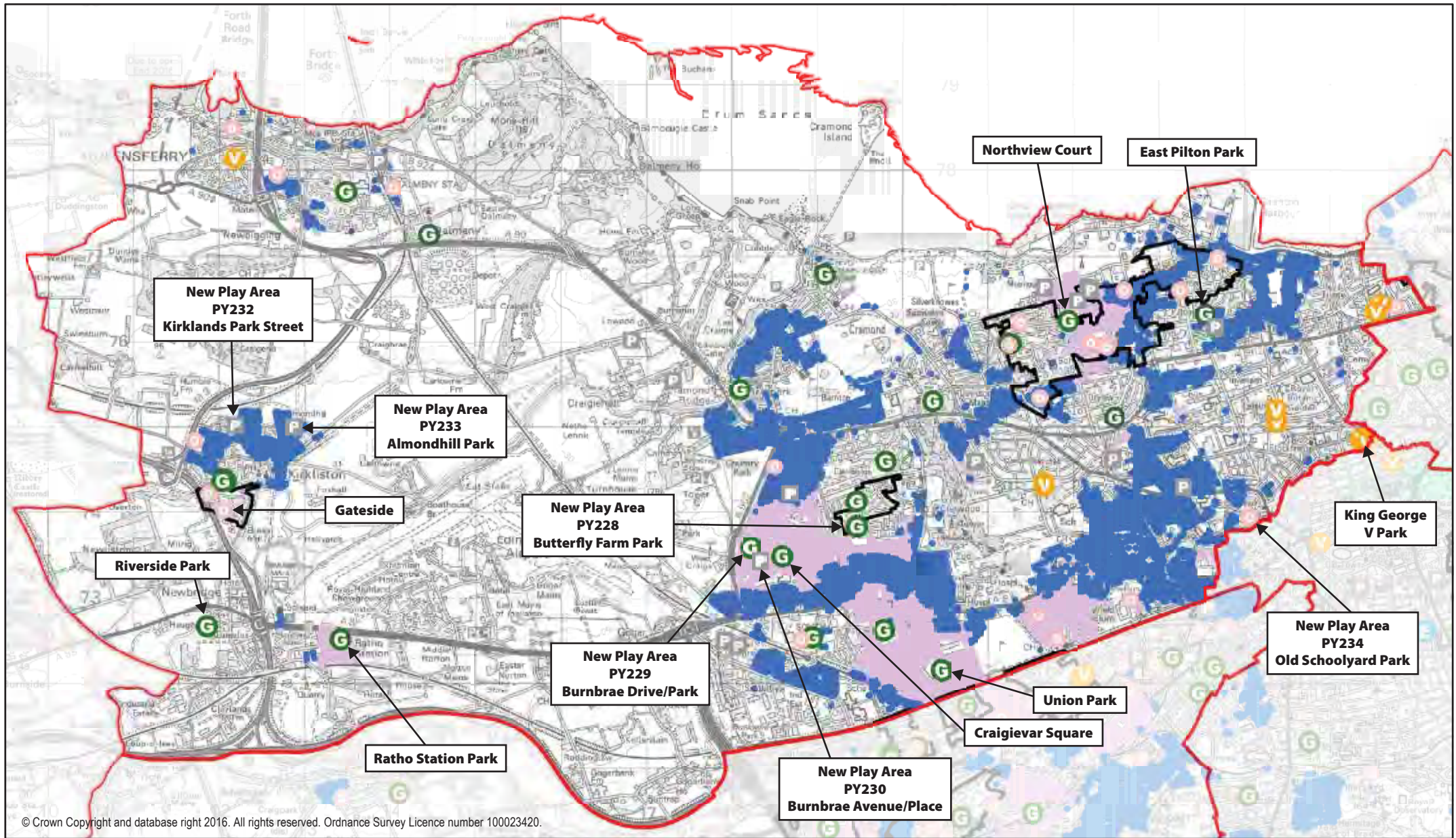
- A play space of good play value (51 – 70) within 800 metres walking distance
- A play space of very good play value (71 – 100) within 1200 metres walking distance
- A play space of excellent play value (101 + ) within 2000 metres direct distance

66% of homes in North West Edinburgh are served by the Play Access Standard by comparison with 67% citywide. Some 34% of homes are not served by the standard, represented by the areas shown in blue in the map overleaf. Residential areas served by the standard are indicated by the black and white base map only, whilst places highlighted in pink reflect improvements in access to greenspaces since 2010.

The following play areas were improved from 'fair' to 'good': Craigievar Square, Union Park, Ratho Station Park, Riverside Park, East Pilton Park and Northview Court. Play facilities were upgraded to 'Very Good' at King George V Park, Eyre Place. New public play provision was created at Dean Village and through private sector housing at East Craigs. Existing provision was removed at West Pilton Rise and renewed at Gateside Kirkliston.

Areas not served by the standard include parts of North Kirkliston, Cramond, Cammo, Barnton, Bughtlin, Blackhall, Drylaw, Wardie, Trinity, Newhaven, Ravelston, Roseburn, Orchard Brae, Carrick Knowe, South Gyle and Corstorphine to the north of Glasgow Road.

Parts of the city underlined above have been identified in the Scottish Index of Multiple Deprivation as within the 20% most deprived areas in Scotland (SIMD 2016).



**Legend**

PY 123 New Play Spaces are shown with a PY site ref.

○ Scottish Index of Multiple Deprivation 2016 (20% most deprived areas in Scotland)

**Play Spaces contributing to standard**

- Play space of 'Excellent' Play Value
- Play space of 'Very Good' Play Value
- Play space of 'Good' Play Value

**Access to Play Space from homes within urban area**

- Homes now served by standard but not in 2010
- Homes still not served by the standard in 2016

**Other Play Spaces not contributing to standard**

- Stand alone Ball Court
- Other Council
- Other non-Council

# North West Locality Play Area Access in 2016

## Appendix 1

### North West Edinburgh

### Open Space Action Plan (March 2017)

#### Allotments and Community Growing

Existing allotments include: Carrick Knowe, Succoth Gardens, Roseburn Cliff, Ferry Road, Warriston, Dean, Inverleith. New provision includes: Drumbrae, Kirkliston and Victoria Park.

Community Growing: Through the Edinburgh Biodiversity Plan, Parks, Greenspaces and Cemeteries, Edible Edinburgh, Edinburgh and Lothians Greenspace Trust and Edinburgh Living Landscape are working to increase create community gardens in areas of deprivation subject to funding. The Council's housing investment strategy is also investigating use of land to support tenants to grow fruit and vegetables.

#### Outdoor Sports Facilities

A new Sport and Physical Activity Strategy will be prepared to examine demand and capacity for outdoor sports facilities. The Open Space Strategy continues to support the long-term objective to direct investment to multi-pitch venues.

Two new all weather courts have been created at Victoria Park Tennis Courts and a tennis court and mini-tennis court creates at Warriston Playing Fields. The former Ferranti Bowling Green at Inverleith has become a children's nursery and one bowling green at Victoria Park has been turned into allotments. The playing fields at the former Agilent factory site in Queensferry have been redeveloped for housing.

#### Cemeteries and Burial Grounds

Quality surveys will be carried out to identify other cemeteries and burial grounds within the Locality which could be improved to benefit public access to greenspace. Friends of Groups will be supported to contribute towards the improvement of historic burial grounds through volunteer activities and fund-raising in recognition of their heritage and recreational value as local greenspaces.

#### The Green Network

The North West Locality includes a series of greenspaces linked by Core Paths, Rights of Way and other local routes. The North Edinburgh Paths network has several branches linking from Roseburn, Warriston with Granton, Trinity and Newhaven, which intersect with the Water of Leith Walkway. These green corridors connect a number of parks in the Locality including Roseburn Park, Inverleith Park, the Royal Botanic Garden Edinburgh, St Mark's Park, Victoria Park, Gypsy Brae and Forth Quarter Park. A spur from this route also gives access to Queensferry and the shore at Queensferry and first section of the Waterfront Promenade. The River Almond connects with these routes and gives access

## Appendix 1

### North West Edinburgh

### Open Space Action Plan (March 2017)

to Cammo Estate Park. The former Queensferry branch line provides a green network from Ferry Glen in Queensferry to Kirkliston and Ratho Station. As the city's largest woodland, Corstorphine Hill LNR provides a major network of paths in its own right. It also provides a key north-south link as Barnton Golf Course and Davidson's Mains Park through to the Water of Leith close to Saughton Park, linking eastwards to Ravelston Woods and westwards to the former Corstorphine branch line. On the southern edge of the Locality and northern edge of the South West Locality, delivery of the tram has also provided new green links between Carrick Knowe and Edinburgh Park Station.

There are a number of Edinburgh Living Landscape (ELL) sites across the North West Locality, including: Gypsy Brae, Davidson's Mains Park, Fauldburn Park, Corstorphine Hill, South Gyle Park, Inverleith Park, Easter Drylaw Recreation Park, West Pilton Park, Granton Crescent and Victoria Park.

Across the city, The Edinburgh Biodiversity Partnership are progressing work to identify, develop and support strategic green network and landscape scale partnership projects to restore, create or reconnect habitats. Edinburgh & Lothians Greenspace Trust, City of Edinburgh Council Planning and Transport, Localities and Edinburgh Living Landscape are also carrying out ongoing cycle path management as funding opportunities arise.

**Open Space Actions** proposed in the North West Locality to meet the Strategy's standards are set out in the map and table below:

Map Ref	Action	Type	Description	Who's involved?	Estimated Cost	Funding	Timescale	Status
a)	Dalmeny to Echline, Queensferry	Green Network	Provision of strategic green corridor* (~12.5ha landscape framework and green network) linking various parts of Queensferry from South Scotstoun to Builyeon Road, including crossing of existing A90.	Respective developers for each site, Planning and Transport	£1.2m	Developer (HSG 32, 33)	With development	Not started



## Appendix 1

### North West Edinburgh

### Open Space Action Plan (March 2017)

b)	South Scotstoun / Dundas Park	Play Space	Meeting the play access standard for South Scotstoun could involve delivery of play provision on site or financial contribution to upgrade Dundas Park play area to 'very good' play value.	Developer	Not known	Developer (HSG 33)	With development	Not started
c)	International Business Gateway Open Space	Large Greenspace	24 ha developer led parkland as part of wider IBG Emp 6 development. Strategic landscape design and open space requirements identified in West Edinburgh Landscape Framework (Dec 2011). Design and maintenance to meet the Council's large greenspace standard. Includes A8 corridor; central parkland; and archaeology park.	Developer	£2m	Developer LDP Greenspace Proposal GS6	With development.	IBG Phase 1 Planning application submitted 15/05580/PPP
		Play Space	Provision of new play area to 'very good' play value	Developer	Not known	Developer	With development.	
d)	Gogar Burn	Green Network	Proposed diversion of the Gogar Burn as shown on the LDP Proposals Map (GS7) to reduce flood risk, improve water quality and enhance biodiversity.	Developer	£22m	Edinburgh Airport / SEPA / City of Edinburgh Council / SNH	2018-2022	Not started
e)	Edinburgh Gateway Station to Maybury and Cammo	Green Network	Provision of strategic (~ 2.5ha) green corridor* linking north-south. This will connect Core Path 12 - A8 Link and Core Path 11 - River Almond. Northern woodland planting at Maybury (~3.5ha)	Respective developers for each site, Planning and Transport	£320k	Developer (HSG 19 & 20)	With development	Not started. Planning applications submitted for HSG 19

## Appendix 1

### North West Edinburgh

### Open Space Action Plan (March 2017)

f)	Cammo	Large Greenspace	Open space provision to provide view corridors to Mauseley Hill, Cammo Water Tower, Cammo Estate Park and Pentland Hills; and landscape framework to Maybury Rd and Boughtlin Burn.	Developer	Not known	Developer (HSG 20)	With development	Not started
		Play Space	New play provision to be provided on site.					
g)	Fauldburn Park	Play Space	Improve to 'good' play value	Parks, Greenspaces and Cemeteries	£80,000	No Council budget allocation. To be met by external funding.	2016-21	Not started. Progress subject to fund-raising by local community.
h)	River Almond Walkway	Green Network	Review potential to deliver continuous route between Cramond and Kirkliston	Planning and Transport; Parks, Greenspaces and Cemeteries	Not known	Not known	Long-term	Not started.
			Upgrading existing sections of the riverside path, including replacement for the Salvesen Steps at Cramond.	Parks, Greenspaces and Cemeteries	Not known	No Council budget allocation. Subject to external funding	Not known	Proposals to address access issues in relation to access for all are being explored in preparation for when resources become available.
i)	Maybury	Large Greenspace	Provision of two new large greenspaces to meet the 2 hectare large greenspace standard across the entire site.	Developer	Not known	Developer (HSG 19)	With development	Planning application submitted
		Play Space	Provision of new play area to 'very good' play value					

## Appendix 1

### North West Edinburgh

### Open Space Action Plan (March 2017)

j)	Edinburgh Park/South Gyle	Green Network	Continuation of the existing north to south greenspace corridor and creation of new pedestrian and cycle links through the site.	Developer	Not known	Developer (Del 4)	With development	Not started
k)	Roseburn Public Park	Play Space	Improve to 'good' play value.	Parks, Greenspaces and Cemeteries	£80,000	No Council budget allocation. To be met by external funding.	2016-21	Consultation undertaken and play area plan agreed with local community.
l)	Inverleith Depot	Large Greenspace	Potential for addition to Inverleith Park and conversion to greenspace if the Council's review of depots determines it is no longer required. LDP reference GS8.	Council	n/a	Council	n/a	Not due
m)	West Pilton Public Park	Play Space	Improve to 'good' play value	Parks, Greenspaces and Cemeteries	£140,000	No Council budget allocation. To be met by external funding.	2016-21	Not started
n)	Granton Waterfront: Central Development Area	Green Network	New ~1 ha open space as part of masterplan for the area.	Developer	£250,000	Developer (EW 2b)	2016-21	Not started

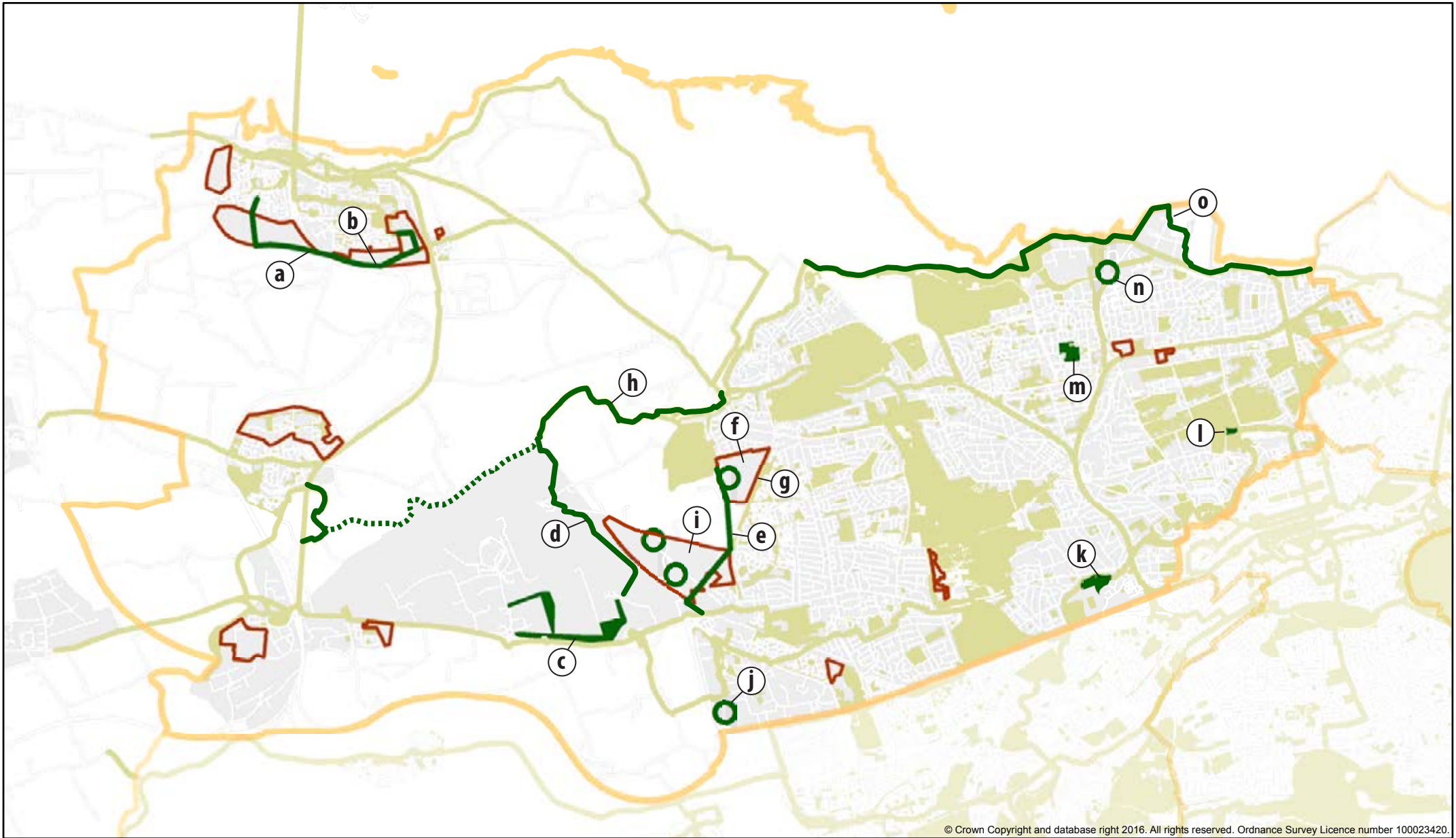
## Appendix 1

### North West Edinburgh

### Open Space Action Plan (March 2017)

o)	Waterfront Promenade	Green Network	The Promenade will form a continuous walkway/cycleway of almost 17 km extending from Cramond in the west to Joppa in the east.	Planning and Transport, Developers.	By section	Economic Development; Planning and Transport; Developers	Long-term term proposal 2016-2037.	Cramond to Hanging Craig to north of West Shore Road complete.
					£694,000	Economic Development	Unfunded. External funding to be sought.	Remaining section to north of West Shore Road designed.
					£80-100,000	Planning and Transport	Unfunded. External funding to be sought.	Lower Granton Road
					Not known	Developers	With Development	Granton Harbour





**Legend**

- Greenspace Action
- Open Space and Core Paths Network
- Indicative Greenspace Actions
- LDP Housing Proposal

**North West Locality  
Strategic Greenspace Actions**

## **Appendix 2**

### **North East Edinburgh**

### **Open Space and Action Plan (March 2017)**

#### **Introduction**

This is one of four Open Space Action Plans to support delivery of Open Space 2021, Edinburgh's Open Space Strategy.

Open Space is a key element of Edinburgh's physical, social and environmental fabric and Open Space 2021 sets guiding standards for existing and new open space provision as the city grows.

Through standards based on open space quality, size and distance from homes, the Strategy aims to increase the number of people that can benefit from greenspaces that are sustainably managed, biologically diverse and contribute to health and wellbeing.

The Open Space Profile shows how the Locality compares to the overall picture of open space across the city, highlighting changes to provision.

It is a working plan, to be reviewed periodically to capture collective efforts which lead to the improvement and extension of Edinburgh's green network. Actions, including estimated costs, may be subject to review, further feasibility studies and change.

The Action Plan sets out proposals to help reduce inequalities in access to good quality open space and play provision. In time, it will reflect local environment priorities emerging through co-production of Locality Improvement Plans by Community Planning partners.

The first version shows citywide priorities identified by Edinburgh's annual parks quality assessment and actions carried forward from the existing Play Area Action Plan (2011-16) and previous Open Space Strategy (2010).

The Action Plan will co-ordinate ongoing open space management actions with those relating to development, including changes arising from individual planning decisions and the delivery of new parks and play areas through the adopted Edinburgh Local Development Plan (LDP).

Further details may be included as related strategies, guidance and projects are progressed, in particular those relating to allotments and food growing, biodiversity, climate change adaptation, outdoor sports facilities, green networks and play.

## Appendix 2

### North East Edinburgh

### Open Space and Action Plan (March 2017)

#### Open Space Profile

##### Audit

The Open Space Audit (2016) recorded urban open spaces over 500 square metres within the Locality and categorised these by their main function or type.

Changes to greenspace provision since 2009/10 include:

- Upgrading of the Restalrig Path between Easter Rd and Leith Links;
- Improvements to the quality of several large public parks to meet standards, including: Jewell Park and Hunter's Hall Park. Leith Links has improved to 'fair' quality but remains below the standard expected for a 'Premier Park';
- Portobello Park became the site for the New Portobello High School;
- New play provision was created at Northfield Drive whilst play space at Leith Fort Street was removed as part of housing regeneration;
- Allotment provision has expanded, including within existing parks and amenity greenspace e.g. Baronscourt Park, Northfield Drive and Greendykes;
- Several outdoor sports facilities have been adapted to other uses including the establishment of Leith Community Croft at the former Leith Links tennis courts and a new tennis court has been provided at the bowling green. Two bowling greens at Broughton Road have been turned into play space for Broughton Primary School;
- Phase 1 of the Niddrie Burn restoration (de-culverting works) has been completed;
- The first section of a multi-user path linking Craigmillar Castle Road, Greendykes Road and Little France Drive has been completed. A masterplan for the wider Little France Parkland (South East Wedge) has been prepared but delivery remains outstanding; and
- Redevelopment at Newcraighall North has resulted in the loss of part of the semi-natural greenspace of the disused rail embankment to be replaced by a new local greenspace and allotments.

The following maps show a picture of where Edinburgh's greenspace standards from Open Space 2021 are being achieved and where there are deficiencies in access to greenspaces or play areas. To reduce inequalities in access to provision, quality data is mapped against the 20% most deprived areas in Scotland from the Scottish Index of Multiple Deprivation (SIMD - 2016).

## Appendix 2

### North East Edinburgh

### Open Space and Action Plan (March 2017)

#### Local Greenspace Standard

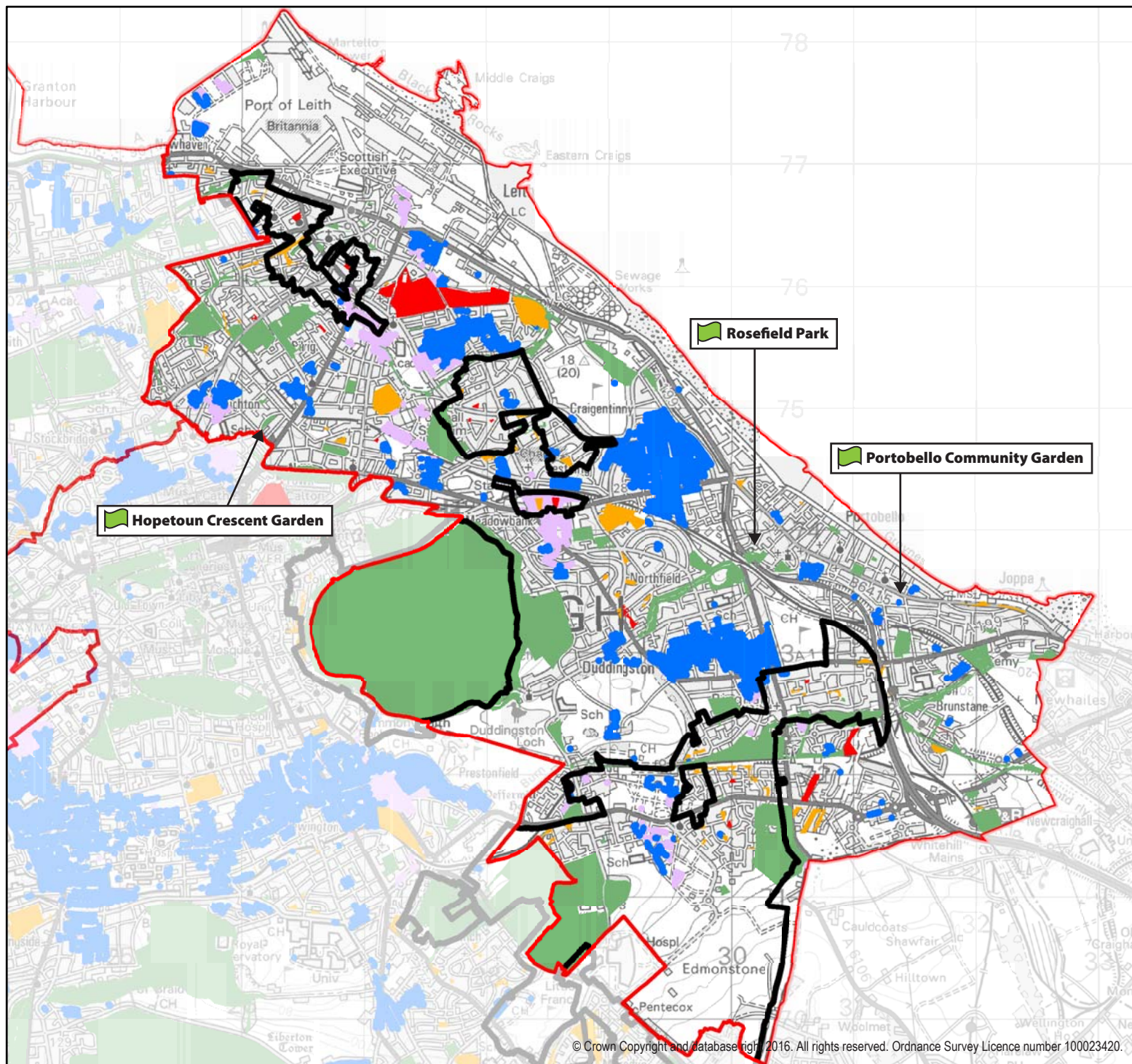
**Open Space 2021 requires all homes to be within 400 metres walking distance of a good' quality, accessible greenspace of at least 500 sq.m.**

**79.7%** of homes in the North East Locality are served by the local greenspace standard by comparison with **87.7%** across the city. Some **30.3%** of homes are not served by the standard, represented by the areas shown in blue in the map overleaf. Residential areas which are served by the standard are indicated by the black and white base map only, whilst places highlighted in pink reflect improvements in access to greenspaces since 2010.

Areas not served by the standard include: residential areas to the north and south of Leith Links; to the south of Craigtinny golf course and housing between Duddingston Road and Milton Road West. These tend not to be areas identified in the Scottish Index of Multiple Deprivation as within the 20% most deprived areas in Scotland.

Local greenspaces awarded a Green Flag in 2016 include: Rosefield Park, Hopetoun Crescent Garden and Portobello Community Garden.








## Legend

### Quality grade



Good Fair Low

-  Homes now served by standard but not in 2010
-  Homes without access to a good quality local greenspace

-  Scottish Index of Multiple Deprivation 2016 (20% most deprived areas in Scotland)

-  Green Flag Award 2016/17

## North East Locality Access to Local Greenspace in 2016

## Appendix 2

### North East Edinburgh

### Open Space and Action Plan (March 2017)

#### Large Greenspace Standard

**Open Space 2021 requires all homes to be within 800m walking distance of an accessible large greenspace of at least 2 hectares.**

- **All newly created large greenspaces should be of 'good' quality regardless of type**
- **Council managed large greenspaces should be of 'good' quality for City Parks, Community Parks and Recreation Grounds and 'good+' for Premier Parks and Natural Heritage Parks.**

**76.2%** of homes in the North East Locality are served by the large greenspace standard by comparison with **79%** across the city. Some **23.8%** of homes are not served by the standard, represented by the areas shown in blue in the map overleaf. Residential areas which are served by the standard are indicated by the black and white base map only, whilst places highlighted in pink reflect improvements in access to greenspaces since 2010.

Since 2010, the Parks Quality Score of the following parks has improved to meet the large greenspace standard: Jewell Park and Hunter's Hall Park.

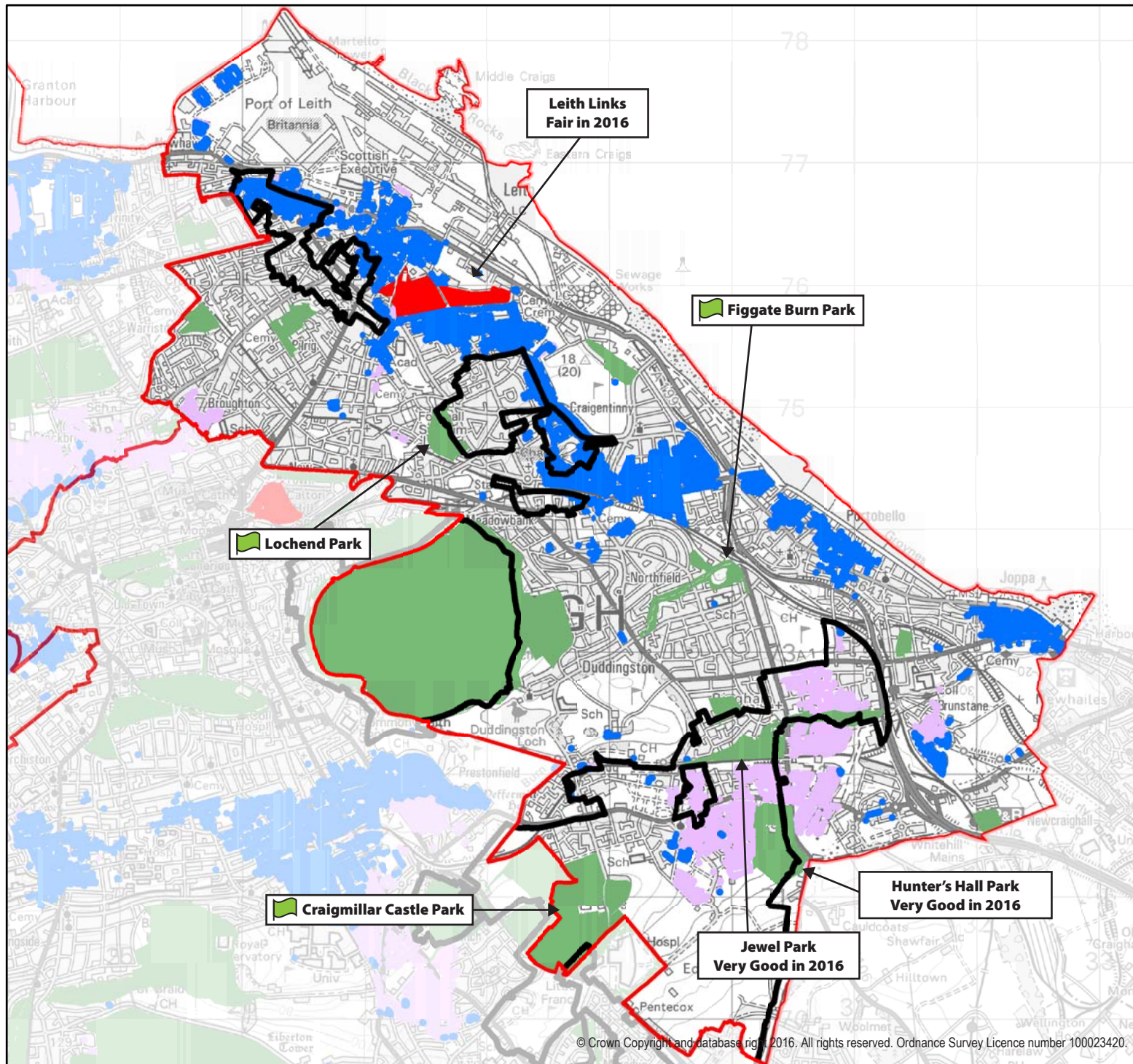
Portobello Park became the site for the new Portobello High School and as a result a new large greenspace called Treverlen Park is to be created on the site of the existing High School.

Leith Links remains below the Good+ standard, resulting in a large number of homes deficient in terms of access to a large greenspace, to the south of Salamander Street, Ocean Drive and Commercial to the north, the Restalrig Railway Path to the south and east and South Fort Street and Great Junction Street to the south and west. This includes some areas identified in the SIMD 2016 as within the 20% most deprived areas in Scotland.

Western Harbour remains deficient in terms of access to a large greenspace with parts of Portobello and Joppa beyond 800 m from a large greenspace.

Large greenspaces awarded a Green Flag in 2016 include: Lochend Park, Figgate Park and Craigmillar Castle Park.

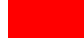






## Legend


Large Open Space

 meeting standard

 not meeting standard

 Homes now served by standard but not in 2010

 Homes without access to a good quality local greenspace

 Scottish Index of Multiple Deprivation 2016 (20% most deprived areas in Scotland)

 Green Flag Award 2016/17

North East Locality  
Access to Large  
Greenspace in 2016

## Appendix 2

### North East Edinburgh

### Open Space and Action Plan (March 2017)

#### Play Access Standard

Open Space 2021 requires all homes to have access to at least one of the following:

- A play space of good play value (51 – 70) within 800 metres walking distance
- A play space of very good play value (71 – 100) within 1200 metres walking distance
- A play space of excellent play value (101 + ) within 2000 metres direct distance

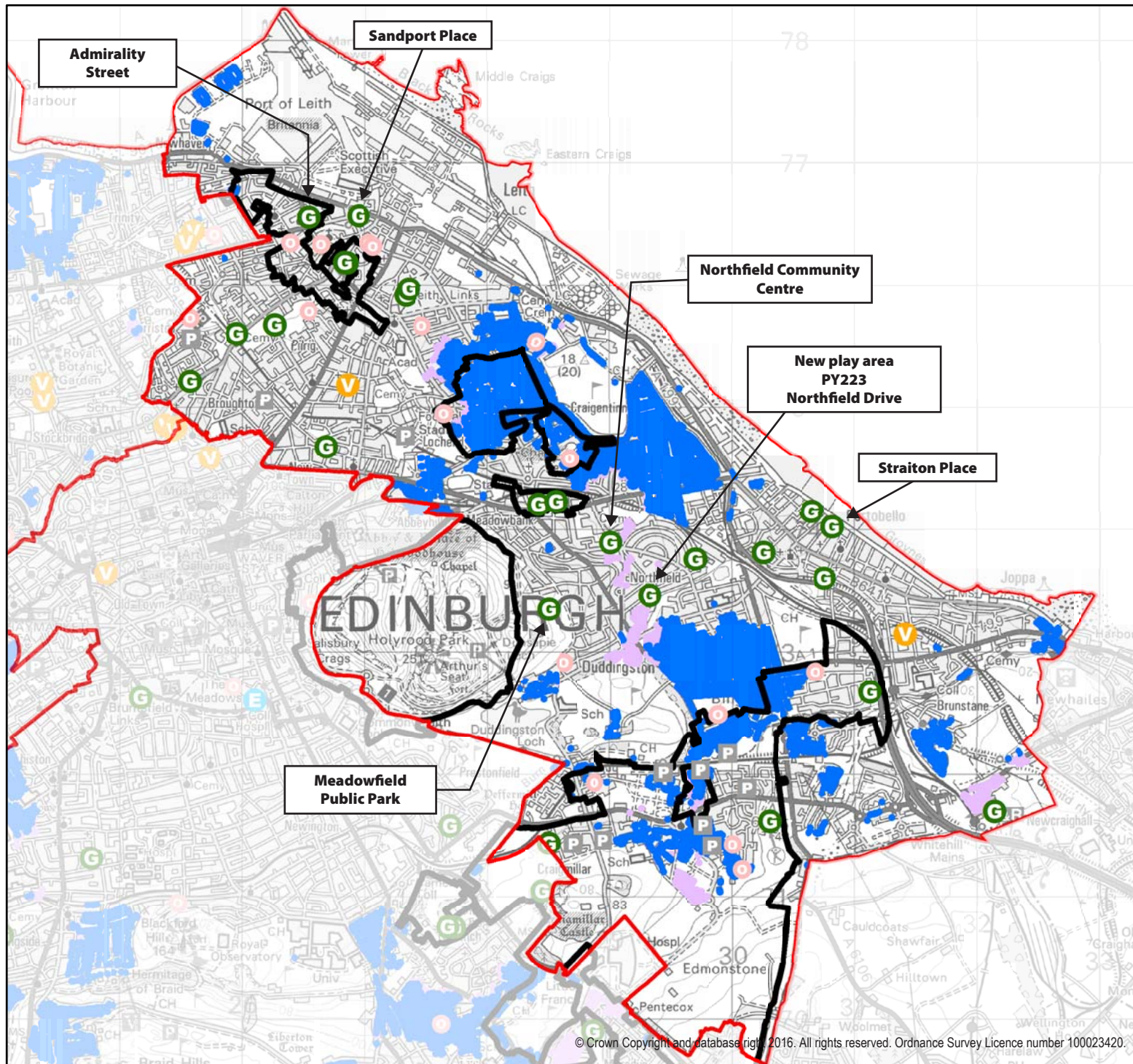
80% of homes in North East Edinburgh are served by the Play Access Standard by comparison with 67% citywide. Some 20% of homes are not served by the standard, represented by the areas shown in blue in the map overleaf. Residential areas which are served by the standard are indicated by the black and white base map only, whilst places highlighted in pink reflect improvements in access to greenspaces since 2010.

The following play areas have been improved from 'fair' to 'good' play value: Sandport Street, Admiralty Street, Meadowfield Public Park, Northfield Community Centre and Straiton Place. New play provision was created at Northfield Drive.

Areas not served by the standard include Restalrig, Lochend and Craigentenny, Duddingston, Niddrie, Craigmillar and Gilberstoun


Parts of the city underlined above have been identified in the Scottish Index of Multiple Deprivation as within the 20% most deprived areas in Scotland (SIMD 2016).








## Legend



**PY 123** New Play Spaces are shown with a PY site ref.

 Scottish Index of Multiple Deprivation 2016 (20% most deprived areas in Scotland)




### Play Spaces contributing to standard

-  Play space of 'Excellent' Play Value
-  Play space of 'Very Good' Play Value
-  Play space of 'Good' Play Value

### Access to Play Space from homes within urban area

-  Homes now served by standard but not in 2010
-  Homes still not served by the standard in 2016

### Other Play Spaces not contributing to standard

-  Stand alone Ball Court
-  Other Council
-  Other non-Council

## North East Locality Play Area Access in 2016

## Appendix 2

### North East Edinburgh

### Open Space and Action Plan (March 2017)

#### Allotments and Community Growing

Existing allotments include: Claremount Park, Restalrig, Prospect Bank, Pilrig Park, Cambridge Ave, Leith Links, Warriston, Craigentiny, Findlay Ave/Sleigh Drive, Telferton and Portobello East. New provision includes Albert Street, Hawkhill and Nisbet, Baronscourt, Northfield Drive and Greendykes.

Community Growing: Through the Edinburgh Biodiversity Plan, Parks, Greenspaces and Cemeteries, Edible Edinburgh, Edinburgh and Lothians Greenspace Trust and Edinburgh Living Landscape are working to increase create community gardens in areas of deprivation subject to funding. The Council's housing investment strategy is also investigating use of land to support tenants to grow fruit and vegetables.

#### Outdoor Sports Facilities

A new Sport and Physical Activity Strategy will be prepared to examine demand and capacity for outdoor sports facilities. The Open Space Strategy continues to support the long-term objective to direct investment to multi-pitch venues.

#### Cemeteries and Burial Grounds

Quality surveys will be carried out to identify those cemeteries and burial grounds which could be improved to benefit public access to greenspace. Friends of Groups will be supported to contribute towards the improvement of historic burial grounds, through volunteer activities and fund-raising, in recognition of their heritage and recreational value as local greenspaces.

#### The Green Network

The Water of Leith and North Edinburgh Paths terminate in the northeast at Leith and Newhaven, providing links back to the city centre to the south. The Restalrig Railway Path is part of a route connecting the shore in Leith with Portobello via Leith Links. To the south and east, the Braid Burn path connects from Craigmillar Castle Park to the shore and Promenade at Portobello via Figgate and Rosefield Parks. It intersects with the Innocent Railway Path at Duddingston to the southeast of Holyrood Park, where the Innocent Railway leads eastwards via Jewel Park, Magdalene Glen and the Brunstane Burn to Joppa beyond the east end of the Promenade. Craigmillar Castle Park also provides links to the south to the Burdiehouse Burn Valley Park.

## Appendix 2

### North East Edinburgh

### Open Space and Action Plan (March 2017)

There are a number of Edinburgh Living Landscape (ELL) sites across the North East locality helping to improve biodiversity of the green network including: Keddie Park, St Andrew Place at the west end of Leith Links, Lochend Park, Baronscourt Park, Figgate Park, Rosefield Park and Hunter's Hall Park.

Across the city, The Edinburgh Biodiversity Partnership are progressing work to identify, develop and support strategic green network and landscape scale partnership projects to restore, create or reconnect habitats. Edinburgh & Lothians Greenspace Trust, City of Edinburgh Council Planning and Transport, Localities and Edinburgh Living Landscape are also carrying out ongoing cycle path management as funding opportunities arise.

**Open Space Actions** proposed in the North East Locality to meet the Strategy's standards are set out in the map and table below:

Map Ref	Action	Type	Description	Who's involved?	Estimated Cost	Funding	Timescale	Status
a)	Leith Links	Large Greenspace	Preparation of a new management plan and engagement on site improvements. Quality to be raised from 'fair' to meet quality standard for Premier Park.	Parks, Greenspaces and Cemeteries and local community	£2m* (including play)	Unfunded	2016-2021	Not started
			Seaward Extension - 2 ha open space proposal for sports pitches, allotments and other open space uses. (LDP Greenspace Proposal GS3)	Developer	£600,000	Developer	With development	Not started
		Play Space	Magnet Play Area (excellent play value) – possibly including a skate facility.	Parks, Greenspaces and Cemeteries and local community	£400,000	Unfunded	2016-2021	Edinburgh and Lothians and Greenspace Trust appointed to consult and fundraise for the project.

## Appendix 2

### North East Edinburgh

### Open Space and Action Plan (March 2017)

b)	Leith Western Harbour Park	Large Greenspace	5.2 ha publically accessible developer led parkland as part of wider Western Harbour EW 1a development including new park with new park with formal and informal recreational facilities for all ages. To be maintained by developer / private maintenance agency.	Developer	£1.04m	Developer, LDP Greenspace Proposal GS2	With development	Not started
c)	Trevelen Park	Large Greenspace	2 ha public park on site of existing Portobello High School.	Parks, Greenspaces and Cemeteries and local community	£1.0m	Funded	2018 start date	Consultation completed by ELGT and Craigentenny and Duddingston NP in 2015
d)	Brunstane	Large Greenspace	2 ha large greenspace to provide the large greenspace standard and sufficient open space to retain setting to category A Listed Brunstane House and Scheduled AM of Brunstane Moated Site.	Developer	Not known	Developer (HSG 29)	With development	Not started. Planning application submitted ref: 16/04122/PPP
		Play Space	Play Space to 'very good' play value to be provided.					
		Allotments	Provision of allotments to complement consented allotments at Newcraighall North.					
		Green Network	Establish new green network connections to Newcraighall village, Newcraighall Public Park, Gilbertstoun, The John Muir Way / Core Path 5 Innocent Railway, Queen Margaret University, Musselburgh and future developments in Midlothian.	Respective developers for each site, Planning and Transport		Developer	With development	

## Appendix 2

### North East Edinburgh

### Open Space and Action Plan (March 2017)

e)	Niddrie Burn Parkland	Green Network	Re-alignment of 1800 linear metres of the burn, associated works, landscaping, habitat creation and road, footpath and bridge construction. Planning permission 08/02474/FUL. LDP Greenspace Proposal GS5.	Planning and Transport; Parks, Greenspaces and Cemeteries.	£118,000	Parks, Greenspaces and Cemeteries	2017	Phase 1 of Niddrie Burn works complete, including river restoration, earthworks and road bridge. Phase 2 including footpaths, pedestrian bridge and tree planting at consultation stage (excludes lighting).
f)	South East Wedge Parkland (Little France Park)	Large Greenspace	Land around Craigmillar / Greendykes retained in the green belt will be landscaped to provide multi-functional parkland, woodland and country paths linking with parallel developments in Midlothian. LDP Greenspace Proposal GS4.	Parks, Greenspaces and Cemeteries.	£2.25m	Unfunded. Subject to external funding applications.	2016-2021	Masterplan prepared. Implementation of parkland not started. The first section of a multi-user path linking Craigmillar Castle Road, Greendykes Road and Little France Drive has been completed



## Appendix 2

### North East Edinburgh

### Open Space and Action Plan (March 2017)

g)	Loganlea Avenue	Play Space	Improve toddler play to 'good' play value.	Parks, Greenspaces and Cemeteries	£50,000	No allocated Council budget. Developer contribution (£20,000) secured via Loaning Rd development. Remainder to be secured by community fund-raising.	2016-2021	Not started.
h)	Niddrie House Square	Play Space	Improve to 'good' play value	Parks, Greenspaces and Cemeteries	£60,000	No allocated Council budget. Funding to be secured by community fund-raising.	2016-2021	Consultation undertaken.
i)	Newcraighall Public Park	Play Space	Improve to 'good' play value	Parks, Greenspaces and Cemeteries	£70,000	Developer contribution (£25,000) secured via new housing at Newcraighall North. Funding application submitted to WREN for £47,000.	2016-2021	Not started
j)	Jack Kane Centre and Hunter's Hall Park	Multi-pitch venue	Refurbishment of the Jack Kane Centre, new and refurbished all weather pitches, outdoor velodrome and bmx track	Communities and Families	£6m	Not known	2017/18	Planning application submitted 16/03107/FUL




## Appendix 2

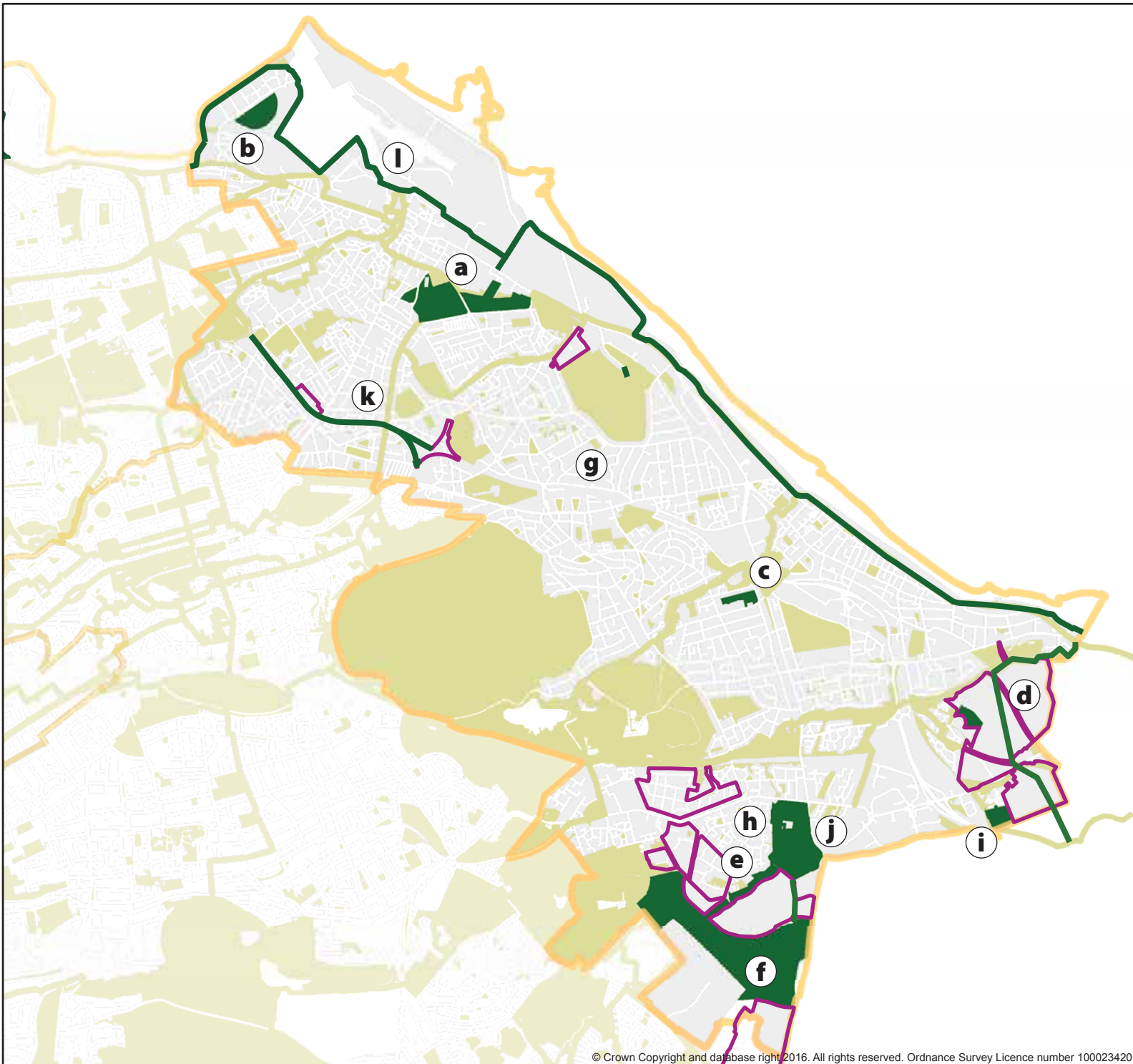
### North East Edinburgh

### Open Space and Action Plan (March 2017)

k)	Powderhall and/or Abbeyhill Railway	Green Network	New green corridors linking to Lochend Park and the Water of Leith from Abbeyhill/Meadowbank.	Planning and Transport, Developers.	Not known	No allocated Council budget.	Subject to agreement with Network Rail	Not started
l)	Waterfront Promenade	Green Network	The Promenade will form a continuous walkway/cycleway of almost 17 km extending from Cramond in the west to Joppa in the east.	Planning and Transport, Developers.	Not known	Developers.	Long-term proposal. 2016-2037	Leith Docks section in abeyance due to LDP Business and Industry allocation. Waterfront and Leith ADF considers an interim solution.

## Legend

-  Greenspace Action
-  Open Space and Core Paths Network
-  LDP Housing Proposal



## North East Locality Strategic Greenspace Actions



## **Appendix 3**

### **South East Edinburgh**

### **Open Space Action Plan (March 2017)**

#### **Introduction**

This is one of four Open Space Action Plans to support delivery of Open Space 2021, Edinburgh's Open Space Strategy.

Open Space is a key element of Edinburgh's physical, social and environmental fabric and Open Space 2021 sets guiding standards for existing and new open space provision as the city grows.

Through standards based on open space quality, size and distance from homes, the Strategy aims to increase the number of people that can benefit from greenspaces that are sustainably managed, biologically diverse and contribute to health and wellbeing.

The Open Space Profile shows how the Locality compares to the overall picture of open space across the city, highlighting changes to provision.

It is a working plan, to be reviewed periodically to capture collective efforts which lead to the improvement and extension of Edinburgh's green network. Actions, including estimated costs, may be subject to review, further feasibility studies and change.

The Action Plan sets out proposals to help reduce inequalities in access to good quality open space and play provision. In time, it will reflect local environment priorities emerging through co-production of Locality Improvement Plans by Community Planning partners.

The first version shows citywide priorities identified by Edinburgh's annual parks quality assessment and actions carried forward from the existing Play Area Action Plan (2011-16) and previous Open Space Strategy (2010).

The Action Plan will co-ordinate ongoing open space management actions with those relating to development, including changes arising from individual planning decisions and the delivery of new parks and play areas through the adopted Edinburgh Local Development Plan (LDP).

Further details may be included as related strategies, guidance and projects are progressed, in particular those relating to allotments and food growing, biodiversity, climate change adaptation, outdoor sports facilities, green networks and play.

## Appendix 3

### South East Edinburgh

### Open Space Action Plan (March 2017)

#### Open Space Profile

#### Audit

The Open Space Audit (2016) recorded urban open spaces over 500 square metres within the Locality and categorised these by their main function or type.

Changes to greenspace provision since 2009/10 include:

- Redevelopment at Gracemount to provide new Council homes has resulted in the replacement of existing local greenspace and play area. Local greenspace has been lost to development at Larkfield Gardens, Moredun Park Gardens, Ravenscroft Gardens and Mayfield Road. New local greenspace has been created at Moredun Dykes Road;
- Since 2010, the Parks Quality Score of the following parks has improved to meet the large greenspace standard: Braid Hills, Inch Park, Moredun Park and Drum Park. Calton Hill has declined in quality below the standard expected of a 'Premier Park';
- Play provision was created at Hyvot Loan and replaced at Gracemount. Play areas were removed at Burdiehouse and The Pleasance;
- At the former St Margaret's School campus, East Suffolk Road, a Planning Appeal Decision granted consent for residential development resulting in the loss of the privately owned playing field. To compensate for this loss, a financial contribution of £130,000 is required from the developer to upgrade the public playing fields at Kirkbrae/Double Hedges;
- The former Tipperlinn Bowling Green has been lost to redevelopment at the Royal Edinburgh Hospital where delivery of a shared use path adjacent the South Suburban Railway is in progress; and
- New allotments have been created at India Place, Inchkeith Court, Prestonfield, Baronscourt and Northfield Drive.

The following maps show a picture of where Edinburgh's greenspace standards from Open Space 2021 are being achieved and where there are deficiencies in access to greenspaces or play areas. To reduce inequalities in access to provision, quality data is mapped against the 20% most deprived areas in Scotland from the Scottish Index of Multiple Deprivation (SIMD - 2016).

## Appendix 3

### South East Edinburgh

### Open Space Action Plan (March 2017)

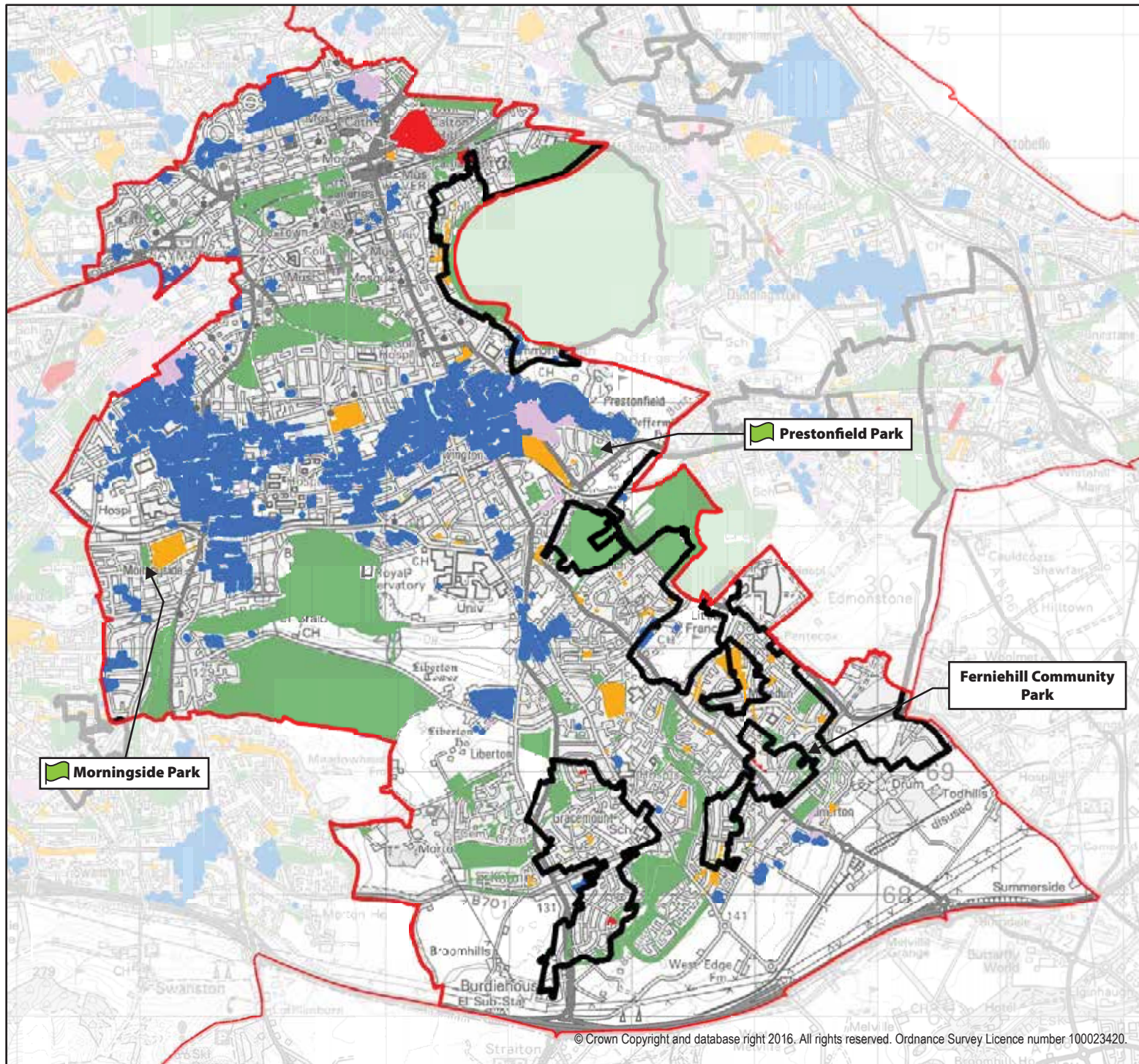
#### Local Greenspace Standard

**Open Space 2021 requires all homes to be within 400 metres walking distance of a good quality, accessible greenspace of at least 500 sq.m.**

**73.5%** of homes in the South East Locality are served by the local greenspace standard by comparison with **87.7%** across the city. Some **26.5%** of homes are not served by the standard, represented by the areas shown in blue in the map overleaf. Residential areas which are served by the standard are indicated by the black and white base map only, whilst places highlighted in pink reflect improvements in access to greenspaces since 2010.

Areas not served by the local greenspace standard, include broad areas of Merchiston, Morningside, Grange and Sciennes with some more limited area deficient in terms of the standard to the north of Liberton by Liberton Brae and Liberton Drive. These tend to be areas of housing with access to private gardens where the historic building pattern provides limited scope to improve access to public open space.

Local greenspaces awarded a Green Flag Award in 2016 included: Morningside Park, Prestonfield Park and Ferniehill Community Park.






## Legend

Quality grade



Good Fair Low

-  Homes now served by standard but not in 2010
-  Homes without access to a good quality local greenspace

-  Scottish Index of Multiple Deprivation 2016 (20% most deprived areas in Scotland)

-  Green Flag Award 2016/17

South East Locality  
Access to Local  
Greenspace in 2016

## Appendix 3

### South East Edinburgh

### Open Space Action Plan (March 2017)

#### Large Greenspace Standard

**Open Space 2021** requires all homes to be within 800m walking distance of an accessible large greenspace of at least 2 hectares.

- **All newly created large greenspaces should be of 'good' quality regardless of type**
- **Council managed large greenspaces should be of 'good' quality for City Parks, Community Parks and Recreation Grounds and 'good+' for Premier Parks and Natural Heritage Parks.**

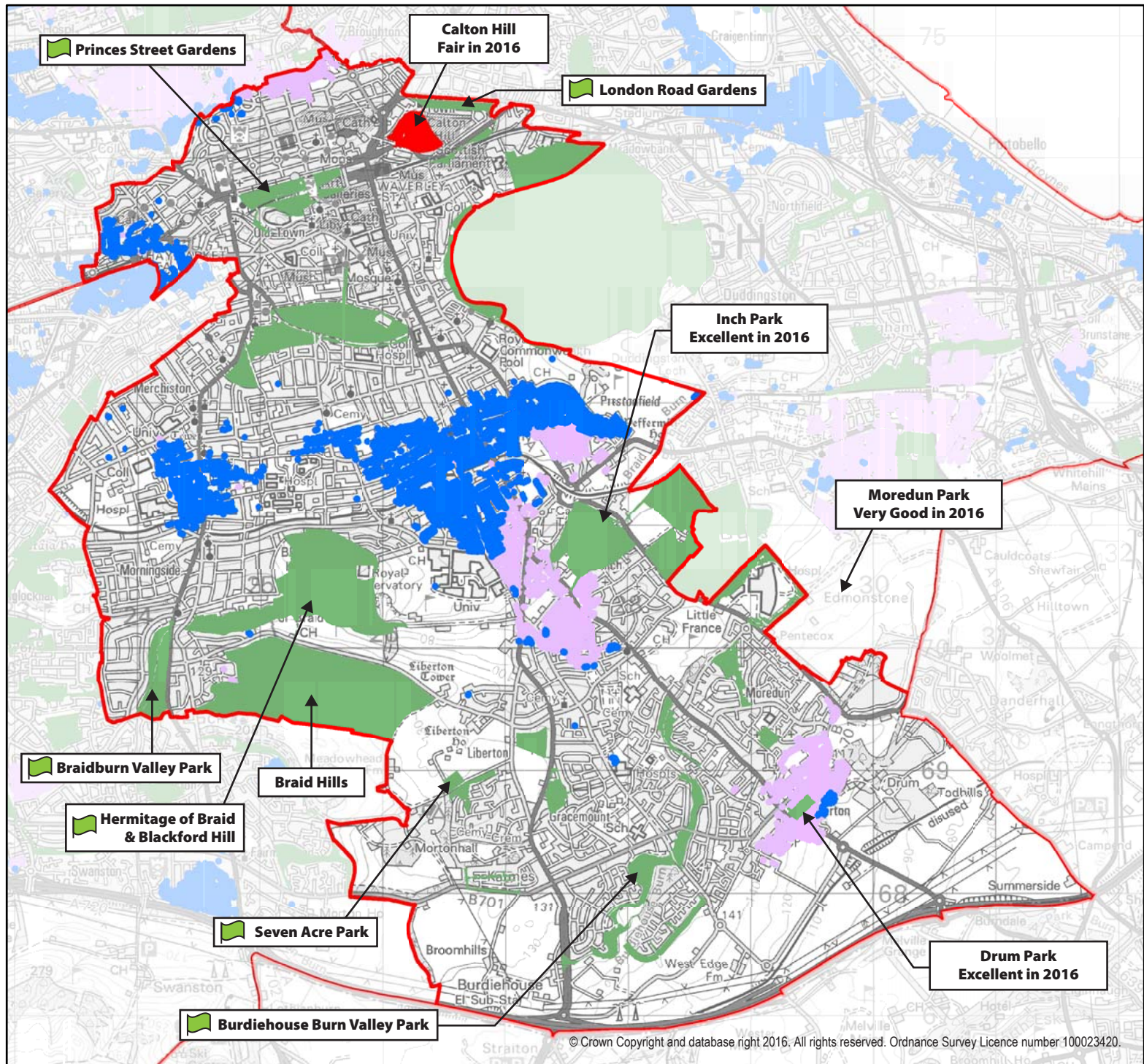
**88.3%** of homes in the South East Locality are served by the large greenspace standard by comparison with **79%** across the city. Some **11.7%** of homes are not served by the standard, represented by the areas shown in blue in the map overleaf. Residential areas which are served by the standard are indicated by the black and white base map only, whilst places highlighted in pink reflect improvements in access to greenspaces since 2010.

Since 2010, the Parks Quality Score of the following parks has improved to meet the large greenspace standard: Braid Hills, Inch Park, Moredun Park and Drum Park. The quality of all other parks and gardens already meeting the standard was either maintained or in most cases further improved.

Calton Hill has declined from 'good' quality in 2009 to 'fair' by 2016, falling below the standard of 'good+' expected of a Premier Park that serves international and national visitors as well as local and citywide needs.

Large Parks and Gardens awarded a Green Flag in 2016 include: London Road Gardens, Princes St Gardens, Braidburn Valley Park, Hermitage of Braid including Blackford Hill, Burdiehouse Burn Valley Park and Seven Acre Park.





### Legend

- Large Open Space
  - meeting standard
  - not meeting standard

---

- Homes now served by standard but not in 2010
- Homes without access to a good quality local greenspace

---

- Scottish Index of Multiple Deprivation 2016 (20% most deprived areas in Scotland)

---

- Green Flag Award 2016/17

© Crown Copyright and database right 2016. All rights reserved. Ordnance Survey Licence number 100023420.

## South East Locality Access to Large Greenspace in 2016

## Appendix 3

### South East Edinburgh

### Open Space Action Plan (March 2017)

#### Play Access Standard

Open Space 2021 requires all homes to have access to at least one of the following:

- A play space of good play value (51 – 70) within 800 metres walking distance
- A play space of very good play value (71 – 100) within 1200 metres walking distance
- A play space of excellent play value (101 + ) within 2000 metres direct distance

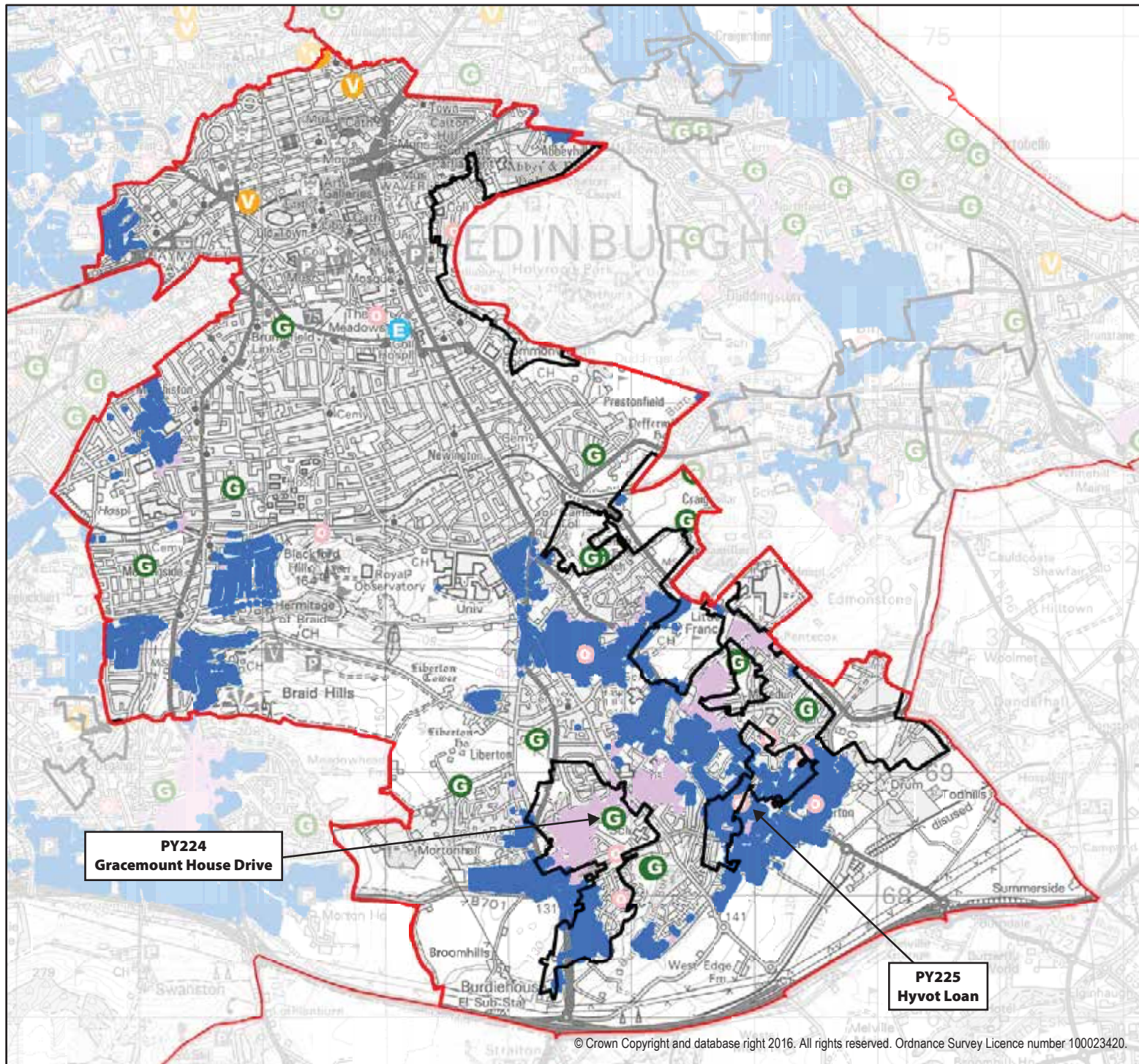
**86.2%** of homes in South East Edinburgh are served by the Play Access Standard by comparison with **67%** citywide. Some **13.8%** of homes are not served by the standard, represented by the areas shown in blue in the map overleaf. Residential areas which are served by the standard are indicated by the black and white base map only, whilst places highlighted in pink reflect improvements in access to greenspaces since 2010.

Play provision was created at Hyvot Loan and replaced as part of redevelopment at Gracemount. Play areas were removed at Burdiehouse and The Pleasance. The play area at Marytree House was improved from 'fair' to 'good' play value. All other play areas were maintained to current play value categories.

Areas not served by the standard include parts of Kaimes and Southouse; and residential areas generally between Lasswade Road and Gilmerton Road – including parts of Hyvot's Bank, Ferniehill and Moredun.

Parts of the city underlined above have been identified in the Scottish Index of Multiple Deprivation as within the 20% most deprived areas in Scotland (SIMD 2016).





## Legend

**PY 123** New Play Spaces are shown with a PY site ref.

○ Scottish Index of Multiple Deprivation 2016  
(20% most deprived areas in Scotland)

### Play Spaces contributing to standard

- E Play space of 'Excellent' Play Value
- V Play space of 'Very Good' Play Value
- G Play space of 'Good' Play Value

### Access to Play Space from homes within urban area

- Homes now served by standard but not in 2010
- Homes still not served by the standard in 2016

### Other Play Spaces not contributing to standard

- B Stand alone Ball Court
- C Other Council
- P Other non-Council

## South East Locality Play Area Access in 2016

## Appendix 3

### South East Edinburgh

### Open Space Action Plan (March 2017)

#### Allotments and Community Growing

Existing allotments include: East Scotland Street Lane – North and South; Bridgend Farm, Lady Road, Relugas Place, West Mains and Midmar. New provision includes: India Place, Inchkeith Court, Prestonfield, Baronscourt and Northfield Drive.

Community Growing: Through the Edinburgh Biodiversity Plan, Parks, Greenspaces and Cemeteries, Edible Edinburgh, Edinburgh and Lothians Greenspace Trust and Edinburgh Living Landscape are working to increase create community gardens in areas of deprivation subject to funding. The Council's housing investment strategy is also investigating use of land to support tenants to grow fruit and vegetables.

#### Outdoor Sports Facilities

A new Sport and Physical Activity Strategy will be prepared to examine demand and capacity for outdoor sports facilities. The Open Space Strategy continues to support the long-term objective to direct investment to multi-pitch venues.

#### Cemeteries and Burial Grounds

The Council will work with Edinburgh World Heritage and community groups to improve five historic burial grounds in the World Heritage Site, including: the Kirkyards of St Cuthbert's, Greyfriars, and Canongate and burial grounds of Old Calton and New Calton.

Quality surveys will be carried out to identify other cemeteries and burial grounds within the Locality which could be improved to benefit public access to greenspace. Friends of Groups will be supported to contribute towards the improvement of historic burial grounds, through volunteer activities and fund-raising, in recognition of their heritage and recreational value as local greenspaces.

#### The Green Network

The Meadows, Braidburn Valley Park, Blackford Hill, Braid Hills and Burdiehouse Burn Valley Park provide important green network connections through the South East Locality. Via short sections of on-road path, the Meadows lead westward to the Union Canal and eastward to Holyrood Park and the Innocent Railway. Blackford Hill and the Hermitage of Braid link westward to the Braid Burn Valley Park and southward via Cockmylane to Swanston and the Pentland Hills Regional Park. There are also east-west links via the Hermitage and Blackford Glen from Dreghorn in the southwest, trending northeastwards Duddingston Loch and the Figgate Burn to Portobello. From Braid Road there are links through the Braid Hills from Mortonhall to Liberton via Stanedykehead. North-south links include from Buckstone Snab to Howe Dean

## Appendix 3

### South East Edinburgh

### Open Space Action Plan (March 2017)

Path and Blackford Hill, from which point the Meadows lies beyond the Grange and Marchmont. Burdiehouse Burn Valley Park leads eastwards from Mortonhall to Craigmillar Castle Park.

There are a number of Edinburgh Living Landscape (ELL) sites across the South East Locality helping to improve biodiversity of the green network including: London Road Gardens, Kirkbrae/Double Hedges, Inch Park, Liberton Park, Burdiehouse Burn Valley Park and Ferniehill Drive.

Across the city, The Edinburgh Biodiversity Partnership are progressing work to identify, develop and support strategic green network and landscape scale partnership projects to restore, create or reconnect habitats. Edinburgh & Lothians Greenspace Trust, City of Edinburgh Council Planning and Transport, Localities and Edinburgh Living Landscape are also carrying out ongoing cycle path management as funding opportunities arise.

**Open Space Actions** proposed in the South East Locality to meet the Strategy's standards are set out in the map and table below:

Map Ref	Action	Type	Description	Who's involved?	Estimated Cost	Funding	Timescale	Status
a)	Calton Hill	Large Greenspace	Preparation of a new management plan and engagement on site improvements. Quality to be raised from 'fair' to meet quality standard for Premier Park.	Edinburgh World Heritage; Culture and Sport; Parks, Greenspaces and Cemeteries	£5 m - unfunded	External funding application to be prepared and if successful any match funding by Council to be subject to approval by Finance and Resources Committee	2016-21	Review of Park Management Plan in progress.



## Appendix 3

### South East Edinburgh

### Open Space Action Plan (March 2017)

b)	Broomhills Park	Large Greenspace	Substantial developer led parkland as part of Broomhills HSG 21 development to meet Council's large greenspace standard. Minded to grant planning application includes 3 ha central parkland.	Developer	Not known	Developer (HSG 21)	With development.	Not started.
		Play Space	Minded to grant planning application includes provision of new play facilities to 'good' play value within central parkland.					
		Green Network	6 ha woodland planting required as part of LDP development principles. See also Mortonhall, Burdiehouse and Gilmerton to Straiton.					
c)	Burdiehouse	Local Greenspace	Integrate the design and layout of open space with the Area of Importance for Flood Management and beyond this area, provide additional amenity and biodiversity benefits through SUDs.	Developer	£50,000	Developer (HSG 22)	With development.	Planning permission granted 14/04880/FUL.
		Green Network	Improve semi-natural habitat and amenity value of the Local Nature Reserve, extend woodland along the southern bank of the Burdiehouse Burn and incorporate off-road links to the Burdiehouse Burn Valley Park.	Developer				
d)	Gilmerton Station Road	Large Greenspace	Creation of new 2 ha large greenspace to meet quality standards to the northwest of the site (P2 The Western Park); delivery of Northern Park, Southern Park; SUDs/local greenspace areas and civic spaces.	Developer	Not known	Developer (HSG 24)	With development.	Planning permission granted 14/01649/PPP. Phasing approved 16/03299/AMC. Western Park to be delivered prior to
		Play Space	Provision of play area to 'very good' play value within P2 - The Western Park.					

## Appendix 3

### South East Edinburgh

### Open Space Action Plan (March 2017)

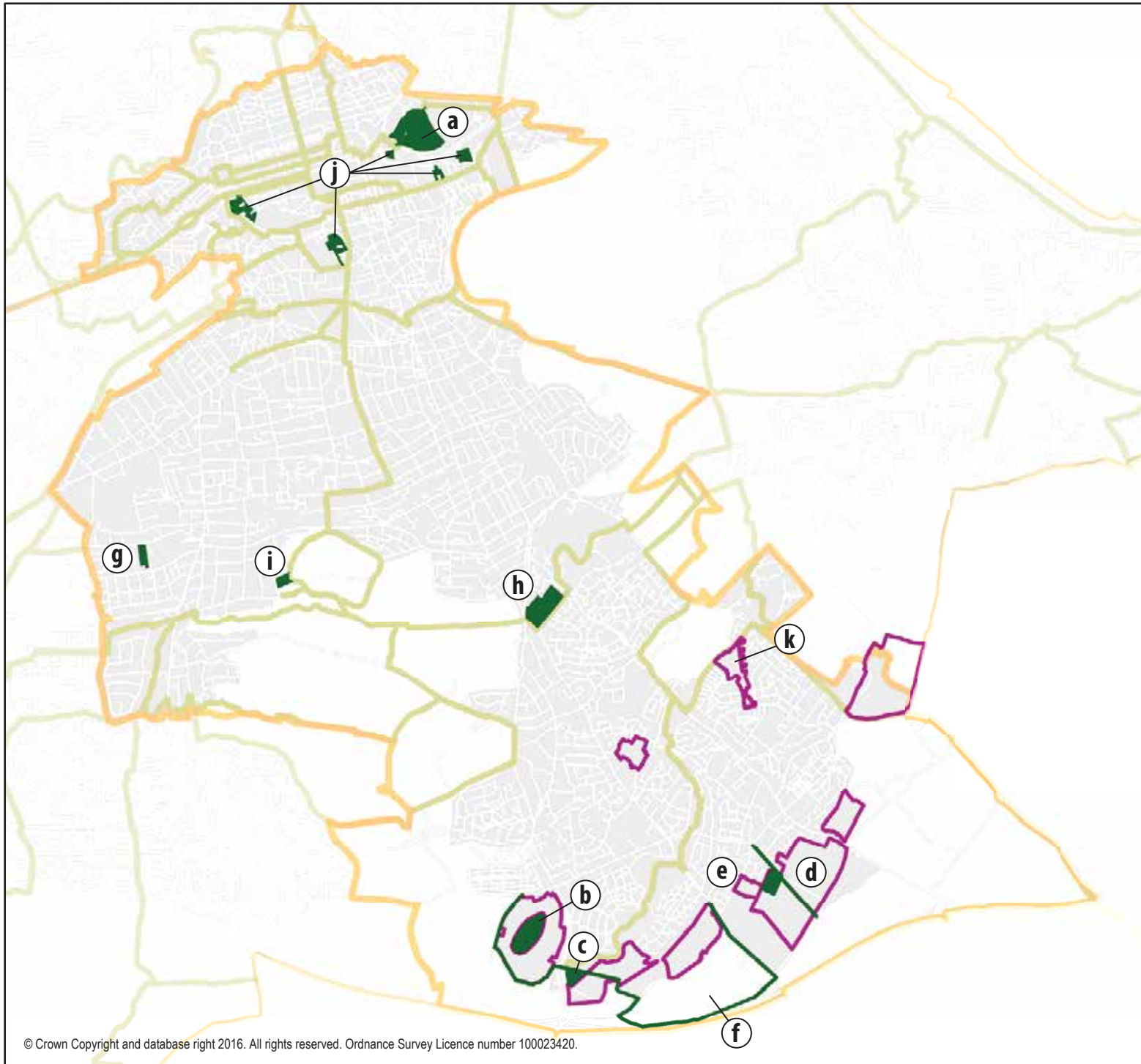
		Green Network	New green corridor approx. 500 m in length between Gilmerton Station Road and Gilmerton Dykes Road.					occupation of phases 5 and 6.
e)	Gilmerton Dykes Road	Green Network	Provision of new multi-user path link from Gilmerton Dykes Road to Gilmerton Station Road.	Developer	Not known	Developer (HSG 23)	With development.	Planning application 14/01446/FUL Appeal Allowed.
f)	Mortonhall, Broomhills, Burdiehouse and Gilmerton to Straiton in Midlothian	Green Network	Green network connections between Burdiehouse Burn Valley Park, Mortonhall, Morton Mains, Gilmerton and Straiton, including off-site multi-user path connection to link with paths network in Midlothian via Straiton Pond. This should include 4m wide landscape treatment to the west across open ground, including verge, hedgerow and hedgerow trees.	Respective developers for each site, Planning and Transport	Not known	Developer (HSG 22, 24)	With development.	Not started.
g)	Morningside Public Park	Play Space	Improve to 'good' play value	Parks, Greenspaces and Cemeteries	£80,000	Unfunded. External funding to be sought by local community	2016-21	Not started.
h)	Kirkbrae / Double Hedges	Playing Fields	Upgrade to the existing playing fields to compensate for loss of private pitch at East Suffolk Road.	Culture and Sport	£130,000	Developer for East Suffolk Road, PPA-230-2172	With development. Prior to the completion of the fourth residential unit the developer shall pay the Council the agreed sum.	Not started.
i)	Midmar Allotments	Allotments	Extension to existing allotment site	Parks, Greenspaces and Cemeteries	£121,000	Unfunded. Est. cost excludes land acquisition.	2016-21	Not started.

## Appendix 3

### South East Edinburgh

### Open Space Action Plan (March 2017)

j)	Edinburgh Graveyards Project	Cemeteries and Burial Grounds	Kirkyards of St Cuthbert's, Greyfriars, and Canongate and burial grounds of Old Calton and New Calton. Improve as community greenspace resources and attractions for visitors to the city	Edinburgh World Heritage, Parks Greenspaces and Cemeteries, Friends Groups	Not known	No Council budget allocation. External funding to be sought.	2016-21	EWH and Friends of New Calton Burial Ground awarded a grant of £11,986 from the New Waverley Community Fund to carry out enhancement work, including: installing a sign on Calton Road; planting; guided tours; onsite trail; lime pointing training workshop; community tidy-ups and family fun day.
k)	Mordunvale	Allotments	Part of LDP Proposal HSG 30 to provide new housing on approx. Half the site and improve the quality of remaining open space, including: allotments and multi-user path links.	Developer / Housing & Regeneration / Parks, Greenspaces and Cemeteries.	Not known	Developer (HSG 30)	With development	Not started.



### Legend

- Greenspace Action
- Open Space and Core Paths Network
- LDP Housing Proposal

## South East Locality Strategic Greenspace Actions

## Appendix 4

### South West Edinburgh

### Open Space Action Plan (March 2017)

#### Introduction

This is one of four Open Space Action Plans to support delivery of Open Space 2021, Edinburgh's Open Space Strategy.

Open Space is a key element of Edinburgh's physical, social and environmental fabric and Open Space 2021 sets guiding standards for existing and new open space provision as the city grows.

Through standards based on open space quality, size and distance from homes, the Strategy aims to increase the number of people that can benefit from greenspaces that are sustainably managed, biologically diverse and contribute to health and wellbeing.

The Open Space Profile shows how the Locality compares to the overall picture of open space across the city, highlighting changes to provision.

It is a working plan, to be reviewed periodically to capture collective efforts which lead to the improvement and extension of Edinburgh's green network. Actions, including estimated costs, may be subject to review, further feasibility studies and change.

The Action Plan sets out proposals to help reduce inequalities in access to good quality open space and play provision. In time, it will reflect local environment priorities emerging through co-production of Locality Improvement Plans by Community Planning partners.

The first version shows citywide priorities identified by Edinburgh's annual parks quality assessment and actions carried forward from the existing Play Area Action Plan (2011-16) and previous Open Space Strategy (2010).

The Action Plan will co-ordinate ongoing open space management actions with those relating to development, including changes arising from individual planning decisions and the delivery of new parks and play areas through the adopted Edinburgh Local Development Plan (LDP).

Further details may be included as related strategies, guidance and projects are progressed, in particular those relating to allotments and food growing, biodiversity, climate change adaptation, outdoor sports facilities, green networks and play.



## Appendix 4

### South West Edinburgh

### Open Space Action Plan (March 2017)

#### Open Space Profile

##### Audit

The Open Space Audit (2016) recorded urban open spaces over 500 square metres within the Locality and categorised these by their main function or type.

Changes to greenspace provision since 2009/10 include:

- Creation of new greenspaces at: Dreghorn Polofields – including path link to Bonaly Country Park; Bellrock Park – the former Fairmilehead Water Treatment Works; and Fountainbridge Green - replacing the loss of open space through redevelopment at Gibson Terrace/Dundee Street;
- The quality of several large public parks has improved to meet quality standards, including: Colinton Mains Park, Kingsknowe (Dovecot Park), Paties Road Recreation Ground and Redhall Park. Saughton Park has improved to ‘good’ quality but remains short of ‘good+’ standard expected of a ‘Premier Park’;
- Junior Play Area at Dumbryden Gardens (no. 66) has been removed and new play facilities have been created at Bellrock Park and Ratho Moorings;
- Woodland management and new path connection provided at Redford Woods through development of a new care home on former Navy, Army and Air Force Institutes store;
- New Allotment provision has been created at Dumbryden;
- Loss of outdoor sports facilities includes the Caledonian Bowling Green and Longstone Bowling Green; and
- Lothianburn and Torphin Golf Courses are no longer in active use.

The following maps show a picture of where Edinburgh’s greenspace standards from Open Space 2021 are being achieved and where there are deficiencies in access to greenspaces or play areas. To reduce inequalities in access to provision, quality data is mapped against the 20% most deprived areas in Scotland from the Scottish Index of Multiple Deprivation (SIMD - 2016)

## Appendix 4

### South West Edinburgh

### Open Space Action Plan (March 2017)

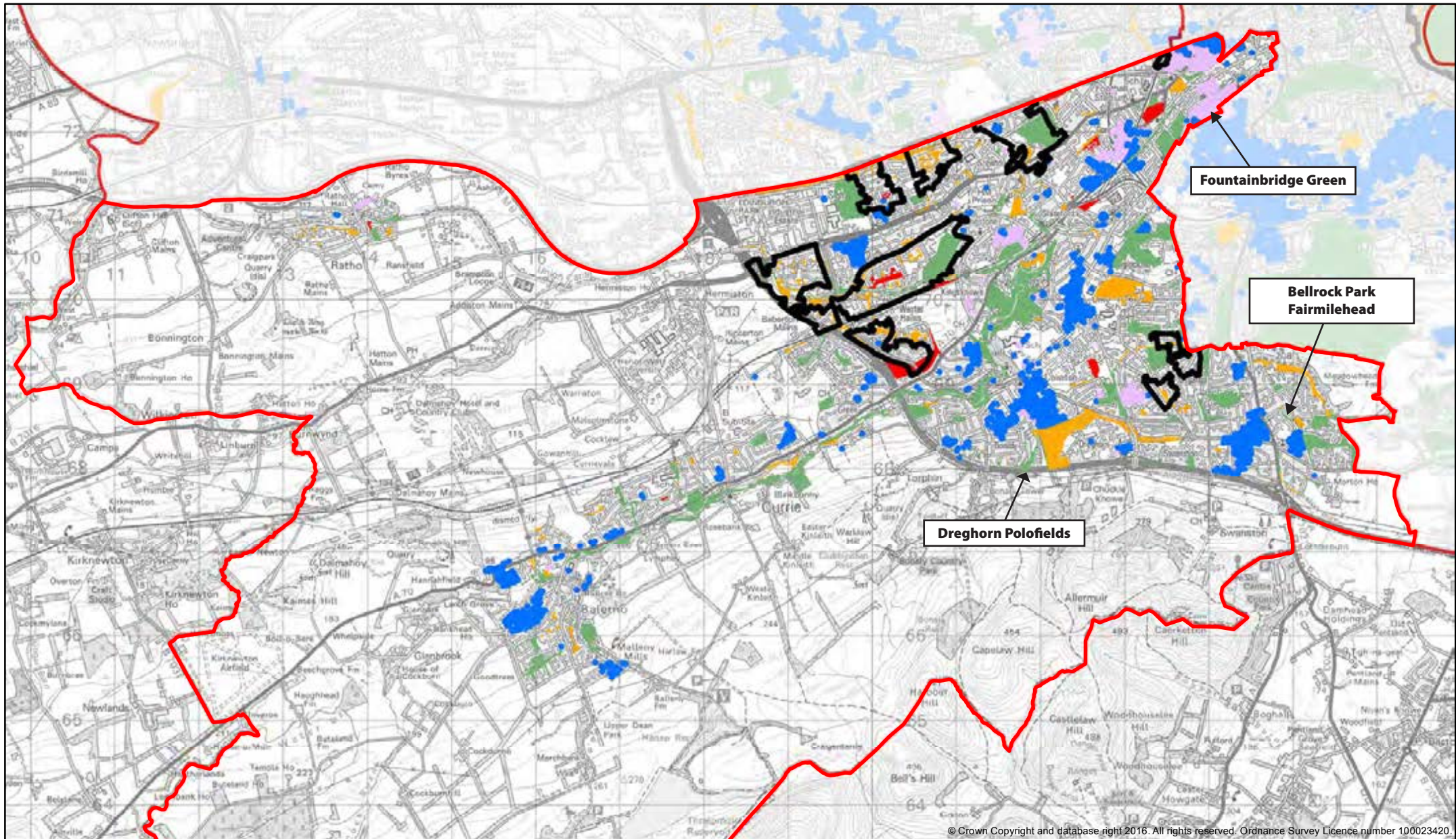
#### Local Greenspace Standard

**Open Space 2021 requires all homes to be within 400 metres walking distance of a good' quality, accessible greenspace of at least 500 sq.m.**







**75.8%** of homes in the South West Locality are served by the local greenspace standard by comparison with **87.7%** across the city. Some **24.2%** of homes are not served by the standard, represented by the areas shown in blue in the map overleaf. Residential areas which are served by the standard are indicated by the black and white base map only, whilst places highlighted in pink reflect improvements in access to greenspaces since 2010.

Areas not served by the standard include the southern edge of Ratho, northwest and southeast Balerno, parts of Currie along the A70 and Riccarton Mains Rd, Clovenstone/Harvester Way - Wester Hailes, northeast of the Calders, Sighthill, Broomhouse, Saughton and Stenhouse, Murrayburn and Dumbryden, Chesser, Hutchison Rd/Moat Drive, parts of Colinton, Shandon and areas of Swanston, Comiston, Frogston Terr/Ave.

The areas of the city underlined above have been identified in the Scottish Index of Multiple Deprivation as within the 20% most deprived areas in Scotland from SIMD 2016.



© Crown Copyright and database right 2016. All rights reserved. Ordnance Survey Licence number 100023420.

<b>Legend</b>	Quality grade	 Scottish Index of Multiple Deprivation 2016 (20% most deprived areas in Scotland)	 Homes now served by standard but not in 2010  Homes without access to a good quality local greenspace	<h2>South West Locality</h2> <h3>Access to Local Greenspace in 2016</h3>
	 Good  Fair  Low			

## Appendix 4

### South West Edinburgh

### Open Space Action Plan (March 2017)

#### Large Greenspace Standard

**Open Space 2021** requires all homes to be within 800m walking distance of an accessible large greenspace of at least 2 hectares.

- **All newly created large greenspaces should be of 'good' quality regardless of type**
- **Council managed large greenspaces should be of 'good' quality for City Parks, Community Parks and Recreation Grounds and 'good+' for Premier Parks and Natural Heritage Parks.**

**69%** of homes are served by the large greenspace standard by comparison with **79%** across the city. Some **31%** of homes are not served by the standard, represented by the areas shown in blue in the map overleaf. Residential areas which are served by the standard are indicated by the black and white base map only, whilst places highlighted in pink reflect improvements in access to greenspaces since 2010.

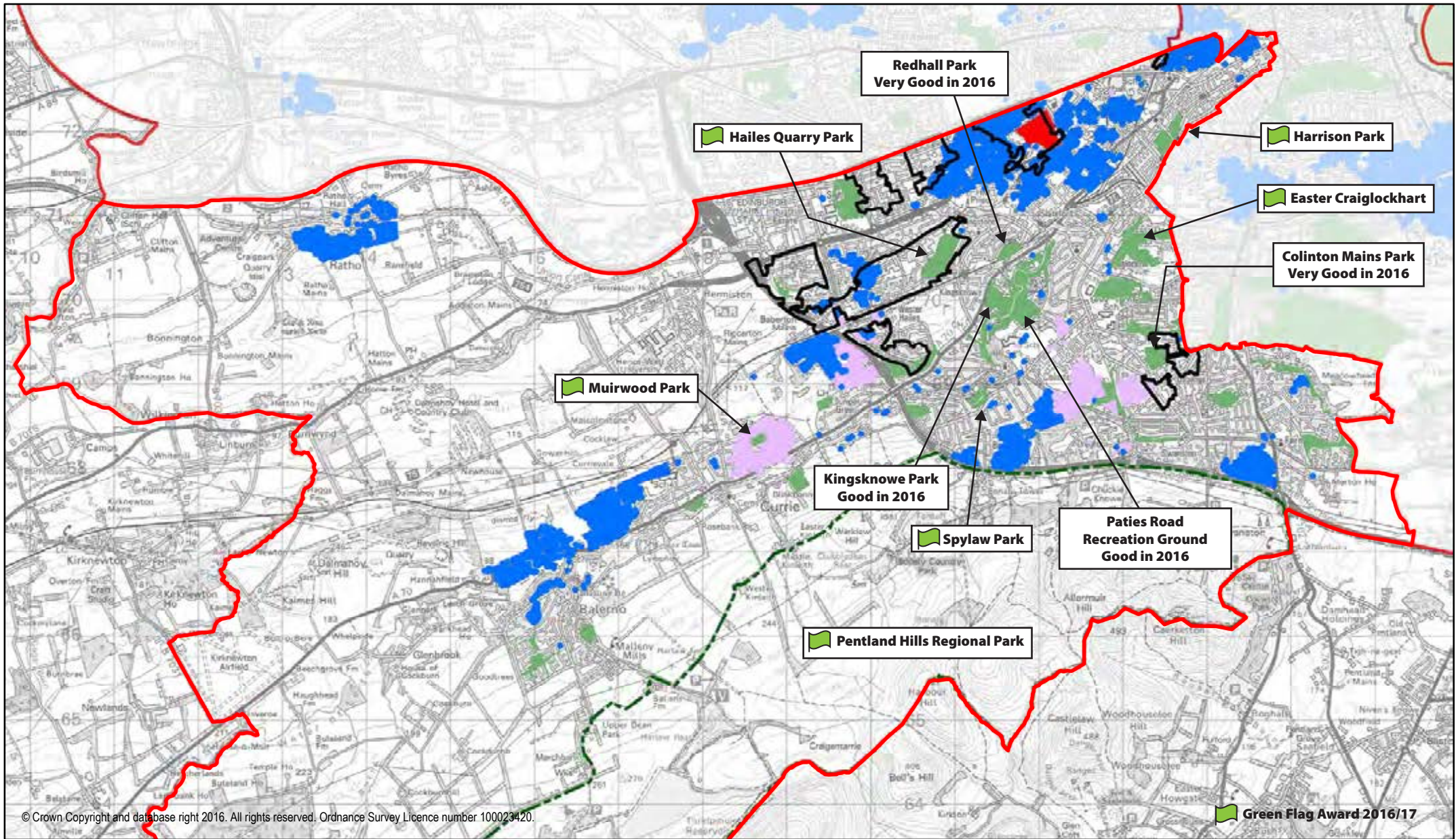
Since 2010, the Parks Quality Score of the following parks has improved to meet the large greenspace standard: Colinton Mains Park, Kingsknowe (Dovecot Park), Paties Road Recreation Ground and Redhall Park.

Curriemuirend has been allocated for housing and allotments through the LDP and as a result, improvement to the existing greenspace at Clovenstone Drive is required.

Saughton Park remains below the Good+ standard, resulting in a large number of homes deficient in terms of access to a large greenspace, including parts of Whitson, Stenhouse and Saughton identified in the SIMD 2016 as within the 20% most deprived areas in Scotland. Lack of access to a large greenspace also exists to the northwest of Balerno and Currie.

Parks awarded a Green Flag in 2016 include: Easter Craiglockhart Hill LNR, Hailes Quarry Park, Harrison Park, Muirwood Park, Spylaw Park and outwith the urban area, The Pentland Hills Regional Park.





<b>Legend</b>	Large Open Space meeting standard	Homes now served by standard but not in 2010	Scottish Index of Multiple Deprivation 2016 (20% most deprived areas in Scotland)	<b>South West Locality</b> <b>Access to Large Greenspaces in 2016</b>
	Large Open Space not meeting standard	Homes still not served by the standard in 2016		



## Appendix 4

### South West Edinburgh

### Open Space Action Plan (March 2017)

#### Play Access Standard

Open Space 2021 requires all homes to have access to at least one of the following:

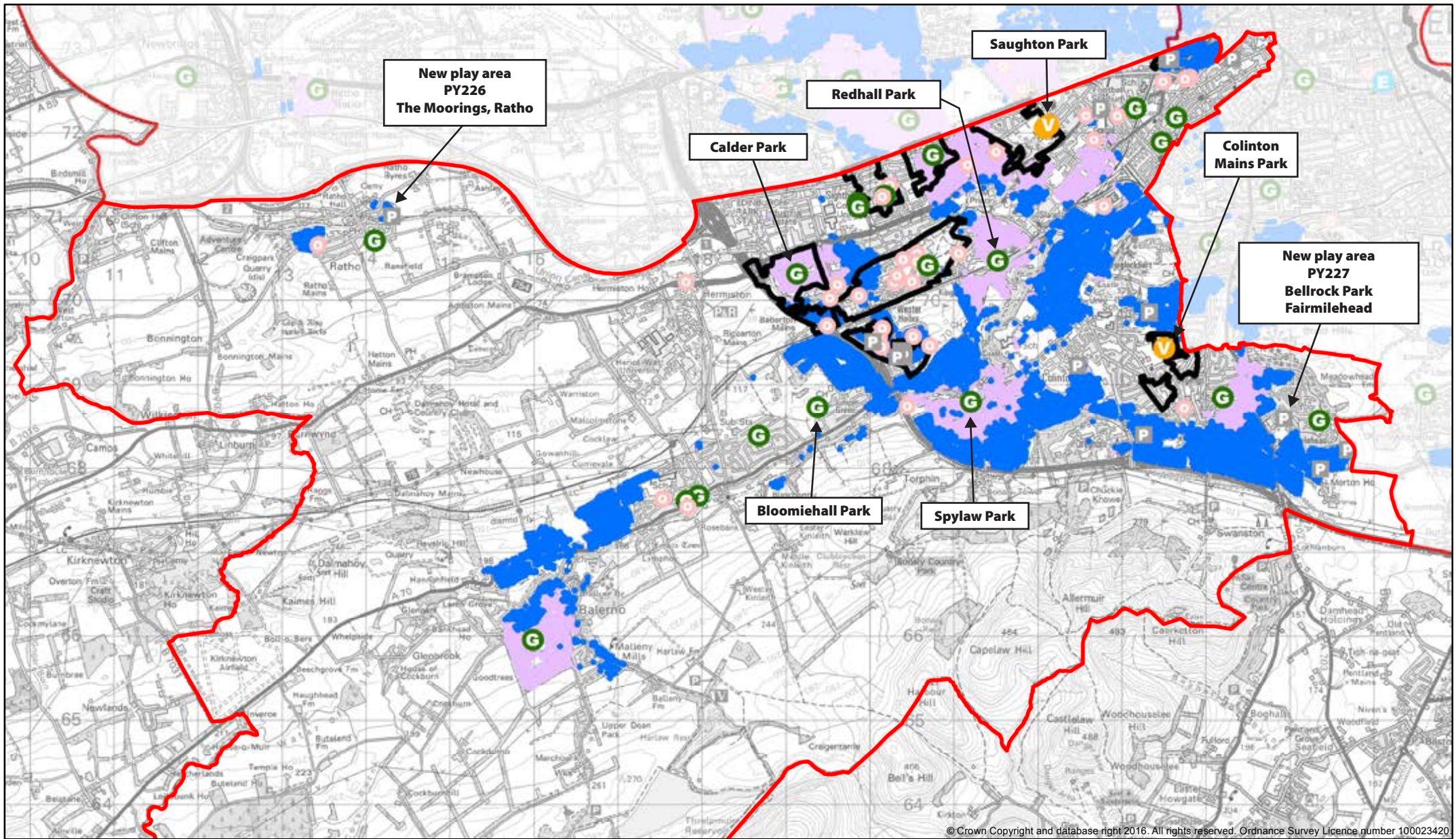
- A play space of good play value (51 – 70) within 800 metres walking distance
- A play space of very good play value (71 – 100) within 1200 metres walking distance
- A play space of excellent play value (101 + ) within 2000 metres direct distance

68% of homes in SW Edinburgh are served by the Play Access Standard by comparison with 67% citywide. Some 32% of homes are not served by the standard, represented by the areas shown in blue in the map overleaf. Residential areas which are served by the standard are indicated by the black and white base map only, whilst places highlighted in pink reflect improvements in access to greenspaces since 2010.

The Play Areas at Calder Park, Redhall Public Park, Spylaw Park and Bloomiehall Park have improved from 'fair' to 'good', whilst at Saughton Park, the play and skate facilities have improved to 'very good' play value. Colinton Mains Park play area has improved from 'fair' to 'very good'.

Areas not served by the standard include the northwest and southeast of Balerno and western parts of Currie; Baberton, Westburn Avenue, Sighthill; Clovenstone/Harvester Way; Longstone Rd, Stenhouse Rd and Chesser; Craiglockhart and Meggetland; Greenbank; and to the north of the Bypass – parts of Colinton, Hunter's Tryst, Swanston, Fairmilehead.

The areas of the city underlined above have been identified in the Scottish Index of Multiple Deprivation as within the 20% most deprived areas in Scotland (SIMD 2016).



© Crown Copyright and database right 2016. All rights reserved. Ordnance Survey Licence number 100023420

<p><b>Legend</b></p> <p>PY 123 New Play Spaces are shown with a PY site ref.</p> <p>○ Scottish Index of Multiple Deprivation 2016 (20% most deprived areas in Scotland)</p>	<p><b>Play Spaces contributing to standard</b></p> <p>E Play space of 'Excellent' Play Value</p> <p>V Play space of 'Very Good' Play Value</p> <p>G Play space of 'Good' Play Value</p>	<p><b>Access to Play Space from homes within urban area</b></p> <p>○ Homes now served by standard but not in 2010</p> <p>● Homes still not served by the standard in 2016</p>	<p><b>Other Play Spaces not contributing to standard</b></p> <p>● Stand alone Ball Court</p> <p>○ Other Council</p> <p>■ Other non-Council</p>	<h2 style="text-align: center;">South West Locality Play Area Access in 2016</h2>
---	---	---	--	---

## Appendix 4

### South West Edinburgh

### Open Space Action Plan (March 2017)

#### Allotments and Community Growing

Existing allotments include: Saughton, Stenhouse, Chesser, Hutchison, Slateford Green, Wester Hailes and Redhall. New provision has been created at Dumbryden.

Through the Edinburgh Biodiversity Plan, Parks, Greenspaces and Cemeteries, Edible Edinburgh, Edinburgh and Lothians Greenspace Trust and Edinburgh Living Landscape are working to increase create community gardens in areas of deprivation subject to funding. The Council's housing investment strategy is also investigating use of land to support tenants to grow fruit and vegetables.

#### Outdoor Sports Facilities

A new Sport and Physical Activity Strategy will be prepared to examine demand and capacity for outdoor sports facilities. The Open Space Strategy continues to support the long-term objective to direct investment to multi-pitch venues.

#### Cemeteries and Burial Grounds

Quality surveys will be carried out to identify those cemeteries and burial grounds which could be improved to benefit public access to greenspace. Friends of Groups will be supported to contribute towards the improvement of historic burial grounds, through volunteer activities and fund-raising, in recognition of their heritage and recreational value as local greenspaces.

#### The Green Network

The Water of Leith (Core Path 18) and Union Canal (Core Path 15/15W) provide key east-west connections through the Locality, connecting a number of greenspaces and providing onward links to the north of the city, city centre, Braid Hills and Pentland Hills, Bonaly and Hillend Country Parks to the south. In the north of the Locality, delivery of the tram has also provided new green links between Carrick Knowe and Edinburgh Park Station.

There are a number of Edinburgh Living Landscape (ELL) sites across the SW locality helping to improve biodiversity of the green network including: Marchbank Park, Currie High School, Baberton Mains Park, Hailes Quarry Park, Wester Hailes Education Centre, Whinhill Park, Paties Road, Cockmylane and the margins of Harrison Park East and Murieston Crescent.

## Appendix 4

### South West Edinburgh

### Open Space Action Plan (March 2017)

Across the city, The Edinburgh Biodiversity Partnership are progressing work to identify, develop and support strategic green network and landscape scale partnership projects to restore, create or reconnect habitats. Edinburgh & Lothians Greenspace Trust, City of Edinburgh Council Planning and Transport, Localities and Edinburgh Living Landscape are also carrying out ongoing cycle path management as funding opportunities arise.

**Open Space Actions** proposed in the South West Locality to meet the Strategy's standards are set out in the following table and map:

Map Ref	Action	Type	Description	Who's involved?	Estimated Cost	Funding	Timescale	Status
a)	Saughton Park	Large Greenspace	Restore the park to its former glory as a visitor destination which showcases horticultural excellence and offers exceptional recreational and visitor facilities, opportunities for learning and volunteering and engenders a sense of pride in the neighbouring communities	Parks, Greenspaces and Cemeteries, Royal Caledonian Horticultural Society, Friends of Saughton Park	£5.2m	73% costs funded by Heritage Lottery Fund 'Parks for People'. Remainder of costs to be met by Council and other external funding	2016 - 2020. Due to re-open in August 2018, followed by ongoing events and activities programme	In progress. Construction phase to commence in early 2017
		Play Space	Potential to also improve play facilities to 'Excellent' play value					
b)	Spylaw Park	Play Space	Play Value raised from 'fair' to 'good'. Working with community to seek additional external funding to raise play value to 'very good'	Parks, Greenspaces and Cemeteries and local community	£30,000	No allocated budget	Outstanding target from 2011-16 Play Area Action Plan	Subject to progress of local fund raising



## Appendix 4

### South West Edinburgh

### Open Space Action Plan (March 2017)

c)	Newmills Park	Large Greenspace	<p>Provision of new 3 ha linear park to meet the Council's large greenspace standard</p> <p>Provision of publicly accessible play area to meet play access standard to 'very good' play value</p> <p>Deliver the first section of a green network link providing an off-road connection between the Water of Leith and Kirknewton</p> <p>Opportunity to provide allotments</p>	Developer	£320,000	Developer (HSG 22) LDP Greenspace Proposal GS11	With development	Planning application submitted 15/05100/FUL
d)	Longstone Southern Parkland	Large Greenspace	Creation of 2 hectare Southern Parkland, including path circuits, decking and boardwalk, footbridge, wetland with reed bed, meadow grass landforms and native species grassland	Developer	Not known	Developer	With development	Not started
e)	Clovenstone Drive	Large Greenspace	Enhance 4ha of existing greenspace at Clovenstone Drive as part of Curriemuirend HSG 31 development, including provision of play space and upgrade football pitch.	Developer/ Housing & Regeneration / Parks, Greenspaces and Cemeteries	£400,000	Developer (HSG 31) LDP Greenspace Proposal GS10	With development	Not started
		Play Space						
	Curriemuirend Park	Playing Fields						
		Allotments	LDP proposal to provide housing and allotments at Curriemuirend Park.		£100,000			



## Appendix 4

### South West Edinburgh

### Open Space Action Plan (March 2017)

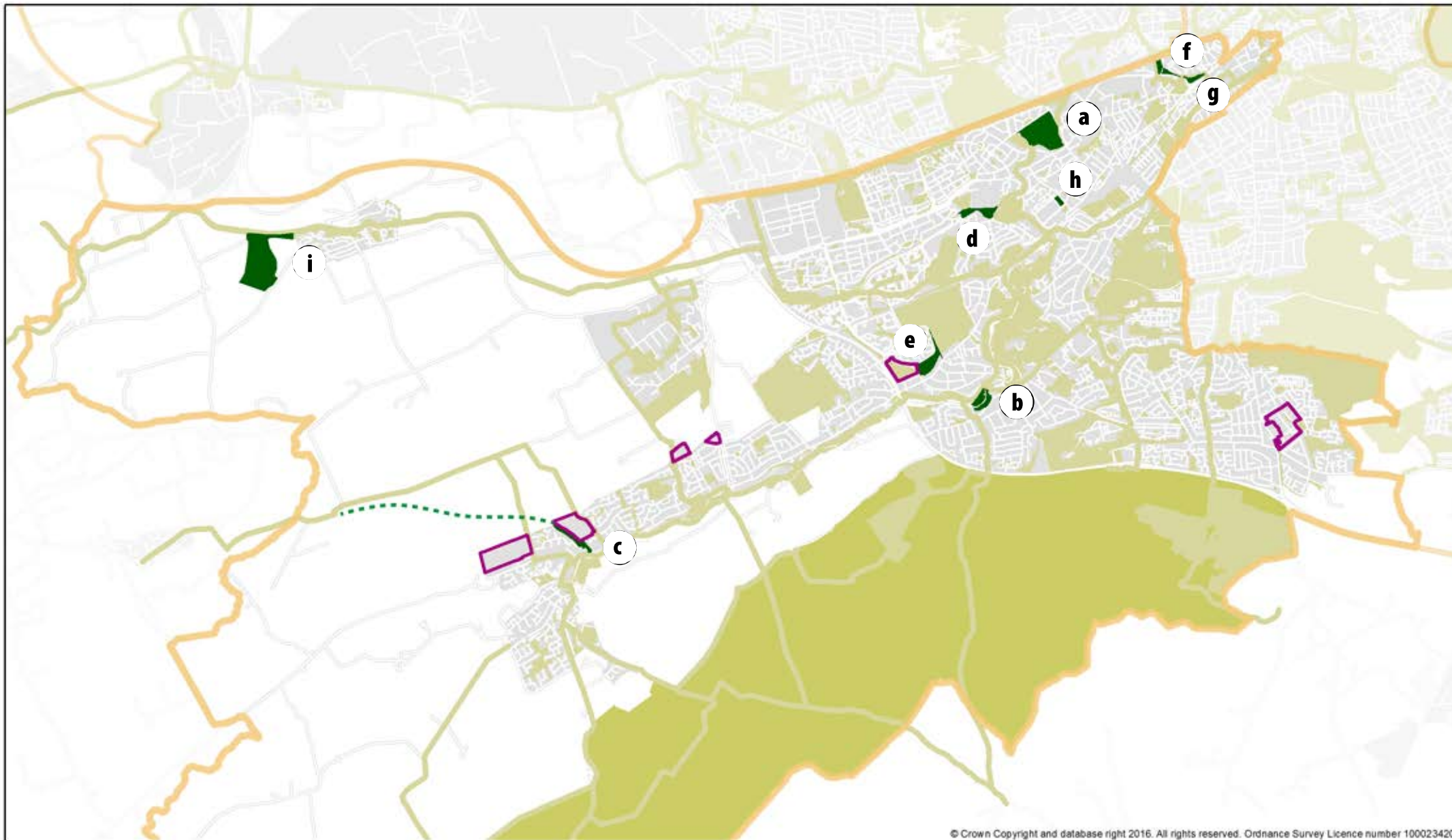
f)	Roseburn to Dalry Community Park and Union Canal	Create new pedestrian/cycle link between Union Canal and North Edinburgh Paths at Roseburn via Dalry Community Park	i. Sauchiebank Ramp & surrounding greenspace, crossing of Mid-Calder rail link, elevated path between Mid Calder railway crossing to Dalry Road including greenspace proposals and improvements to Dalry Community Park. This is to include renewal of the play area and sports pitch, lighting, seating and wayfinding to celebrate the new link. Toucan crossing to West Approach Road and link to Union Canal via Gibson Terrace.	Planning and Transport, Parks, Greenspaces and Cemeteries, Developer	£5.9m	No allocated budget. External funding to be sought.	2017-20	Feasibility Study and link to Union Canal completed.
			ii. Potential future Edinburgh - Glasgow Railway line crossing proposals between the Roseburn Path and Sauchiebank		Not known		Not known	Initial feasibility study completed.
			iii. Potential future West Approach Road Bridge Crossing proposals connecting between the Dalry Community Park and Dundee Street		£1.4m	Not known		
			iv. Opportunity to extend Dalry Community Park as part of redevelopment of Fountainbridge as set out in LDP Greenspace Proposal GS1 / Fountainbridge Development Brief.		£100,000	Developer	With development	Not started

## Appendix 4

### South West Edinburgh

### Open Space Action Plan (March 2017)

g)	Yeaman Place to Union Canal	Green Network	Create new pedestrian/cycle access from Yeaman Place to Union Canal as part of potential future redevelopment of the site	Developer, Planning and Transport	Not known	Developer	Subject to redevelopment of land adjacent Union Canal	Not started
h)	Chesser Avenue	Civic Space	Opening up to public access of open space which forms setting of listed building at Chesser Avenue	Developer, Planning and Transport	Not known	Developer	With development	Not started. Planning application approved for a new events space/public square at Chesser Avenue, including parking.
i)	Craigpark Quarry	Large Greenspace	Restoration of the quarry to provide a new country park linked to the redevelopment of part of the quarry for residential use. Proposals include earthworks, native grassland, tree planting, formation of path networks, water body and drainage infrastructure.	Developer	Not known	Developer	With development	Infill of quarry, earthworks and seeding in progress



**Legend**

- Greenspace Action
- Open Space and Core Paths Network
- Other Potential Access
- LDP Housing Proposal

South West Locality  
Strategic Greenspace Actions